

\$410,000 - 1802 11 Avenue N, Lethbridge

MLS® #A2238150

\$410,000

4 Bedroom, 2.00 Bathroom, 1,087 sqft

Residential on 0.16 Acres

Winston Churchill, Lethbridge, Alberta

Original character and timeless charm! With 3 bedrooms up and 1 down this bungalow offers the perfect space for a family or the opportunity to add a suite with a separate entrance. Offering 2 full bathrooms, a living room and family room this home has the perfect layout and great bones for someone looking to add their touch to this mid century charmer. Situated in a quiet, established neighbourhood and on a corner lot close to schools and other amenities. Don't wait on this potential!

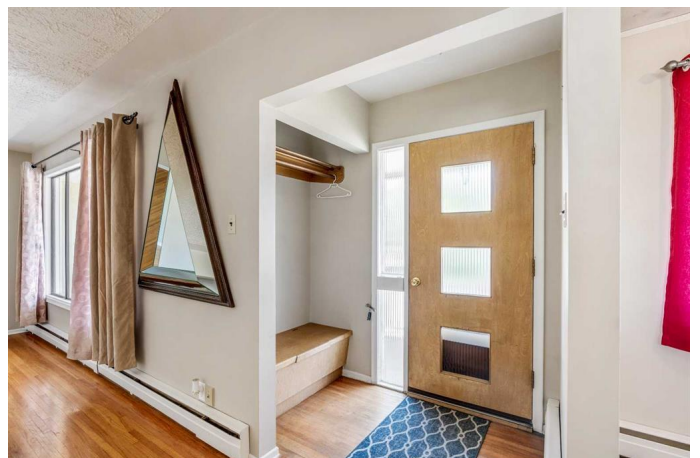
Built in 1959

Essential Information

MLS® #	A2238150
Price	\$410,000
Bedrooms	4
Bathrooms	2.00
Full Baths	2
Square Footage	1,087
Acres	0.16
Year Built	1959
Type	Residential
Sub-Type	Detached
Style	Bungalow
Status	Active

Community Information

Address 1802 11 Avenue N



Subdivision	Winston Churchill
City	Lethbridge
County	Lethbridge
Province	Alberta
Postal Code	T1H 1N2

Amenities

Parking Spaces	4
Parking	Single Garage Attached, Attached Carport
# of Garages	1

Interior

Interior Features	Built-in Features
Appliances	Electric Stove, Range Hood, Refrigerator, Washer/Dryer
Heating	Boiler, Hot Water
Cooling	None
Has Basement	Yes
Basement	Finished, Full

Exterior

Exterior Features	Garden
Lot Description	Back Yard, Corner Lot
Roof	Asphalt Shingle
Construction	Wood Siding
Foundation	Poured Concrete

Additional Information

Date Listed	July 12th, 2025
Days on Market	6
Zoning	R-L

Listing Details

Listing Office	SUTTON GROUP - LETHBRIDGE
----------------	---------------------------

Data is supplied by Pillar 9â„¢ MLS® System. Pillar 9â„¢ is the owner of the copyright in its MLS® System. Data is deemed reliable but is not guaranteed accurate by Pillar 9â„¢. The trademarks MLS®, Multiple Listing Service® and the associated logos are owned by The Canadian Real Estate Association (CREA) and identify the quality of services provided by real estate professionals who are members of CREA. Used under license.