

\$399,900 - 5 Richfield Crescent, Sylvan Lake

MLS® #A2238253

\$399,900

4 Bedroom, 2.00 Bathroom, 1,003 sqft

Residential on 0.09 Acres

Ryders Ridge, Sylvan Lake, Alberta

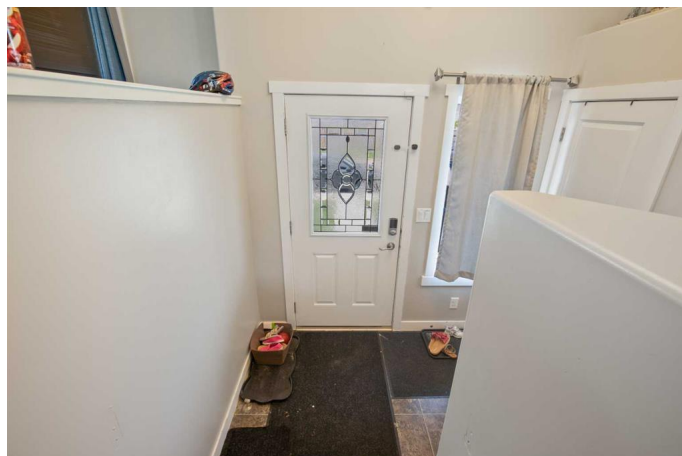
FEATURING this fully finished, bi-level home in Ryders Ridge, Sylvan Lake! With a stylish 1,003 sqft layout, this property is an ideal choice for those in search of a great starter home. The open floor plan with vaulted ceilings creates a bright and inviting space, complemented by upgraded designer hickory cabinets with under-counter lighting, black appliances, a black SIL granite sink, and a large pantry leading to a covered 9x10 deck. The master bedroom features double closets and there's also a large linen closet, another spacious bedroom, and a generous bathroom on this level. The large windows and great layout make this plan a hit! Moving downstairs, you'll find a bright and functional space with most of the work already done for you. The professionally developed basement features two more sizeable bedrooms, a huge family room, under-stair storage, a laundry mechanical room, and a four-piece bathroom. Additionally, the roughed-in underfloor heat, high efficient furnace, and power venting HWT ensure comfort and efficiency. Outside, there's plenty of parking at the back, a storage shed, and partial fencing. This complete home is ready for its new owners!

Built in 2013

Essential Information

MLS® # A2238253

Price \$399,900



Bedrooms	4
Bathrooms	2.00
Full Baths	2
Square Footage	1,003
Acres	0.09
Year Built	2013
Type	Residential
Sub-Type	Detached
Style	Bi-Level
Status	Active

Community Information

Address	5 Richfield Crescent
Subdivision	Ryders Ridge
City	Sylvan Lake
County	Red Deer County
Province	Alberta
Postal Code	T4S0J8

Amenities

Parking Spaces	2
Parking	Off Street, Parking Pad, Rear Drive, See Remarks

Interior

Interior Features	See Remarks
Appliances	Dishwasher, Electric Stove, Microwave Hood Fan, Refrigerator, Washer/Dryer
Heating	Forced Air
Cooling	None
Has Basement	Yes
Basement	Finished, Full

Exterior

Exterior Features	Balcony, Other
Lot Description	Back Lane, Rectangular Lot
Roof	Asphalt Shingle
Construction	Concrete, Wood Frame
Foundation	Poured Concrete

Additional Information

Date Listed	July 13th, 2025
Zoning	R5

Listing Details

Listing Office	Century 21 Advantage
----------------	----------------------

Data is supplied by Pillar 9â„¢ MLS® System. Pillar 9â„¢ is the owner of the copyright in its MLS® System. Data is deemed reliable but is not guaranteed accurate by Pillar 9â„¢. The trademarks MLS®, Multiple Listing Service® and the associated logos are owned by The Canadian Real Estate Association (CREA) and identify the quality of services provided by real estate professionals who are members of CREA. Used under license.