

\$465,000 - 17 Castelani Crescent Se, Medicine Hat

MLS® #A2238374

\$465,000

5 Bedroom, 3.00 Bathroom, 1,218 sqft

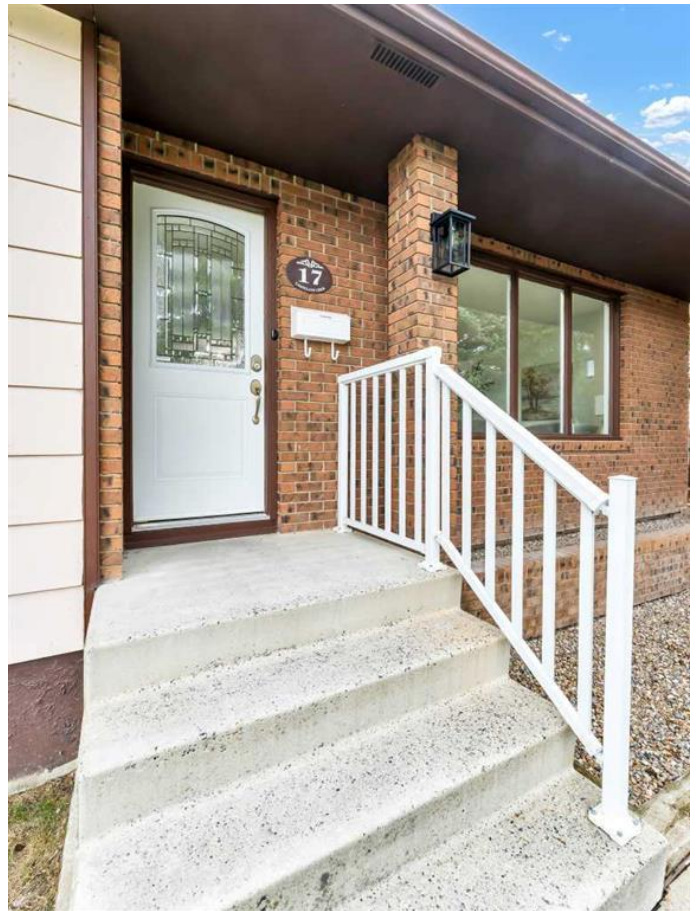
Residential on 0.17 Acres

Crestwood-Norwood, Medicine Hat, Alberta

Welcome to 17 Castelani Crescent, this is truly a beautifully refreshed home that feels brand new. This home has undergone a full interior update with clean, modern finishes and a layout that feels both elevated and functional. From the moment you walk in, youâ€™ll notice the bright, airy atmosphere and the fresh scent of a new beginning, creating a space that feels like home.

Every inch of this interior has been thoughtfully redesigned with on-trend finishes, updated surfaces, and a color palette thatâ€™s fresh, modern, and effortlessly inviting. The kitchen offers generous storage, stylish cabinetry, and flows perfectly into the dining area â€“ ideal for casual dinners or hosting friends. Step right out onto the back deck and enjoy your morning coffee while overlooking the spacious private yard. This home features 5 bedrooms and 3 full bathrooms, offering the space and flexibility today's families need. The primary suite includes a sleek 3-piece ensuite, while the lower level features two more bedrooms (one with a walk-in closet), a cozy second living area, a full bath, and a laundry room with additional storage. Located in a quiet, family-friendly neighborhood close to parks, schools, daycares, and amenities. If you're searching for a home thatâ€™s stylish, fresh, and completely move-in ready, 17 Castelani Crescent is your perfect match.

Built in 1976



Essential Information

| | |
|----------------|-------------|
| MLS® # | A2238374 |
| Price | \$465,000 |
| Bedrooms | 5 |
| Bathrooms | 3.00 |
| Full Baths | 3 |
| Square Footage | 1,218 |
| Acres | 0.17 |
| Year Built | 1976 |
| Type | Residential |
| Sub-Type | Detached |
| Style | Bungalow |
| Status | Active |

Community Information

| | |
|-------------|--------------------------|
| Address | 17 Castelani Crescent Se |
| Subdivision | Crestwood-Norwood |
| City | Medicine Hat |
| County | Medicine Hat |
| Province | Alberta |
| Postal Code | T1B 1S9 |

Amenities

| | |
|----------------|--|
| Parking Spaces | 2 |
| Parking | Double Garage Detached, Driveway, Garage Faces Rear, Heated Garage, Insulated, Off Street, RV Access/Parking |
| # of Garages | 1 |

Interior

| | |
|-------------------|---|
| Interior Features | See Remarks |
| Appliances | Central Air Conditioner, Dishwasher, Garage Control(s), Microwave, Refrigerator, Stove(s), Washer/Dryer |
| Heating | Forced Air |
| Cooling | Central Air |
| Has Basement | Yes |
| Basement | Finished, Full |

Exterior

| | |
|-------------------|------|
| Exterior Features | None |
|-------------------|------|

| | |
|-----------------|-------------------------------|
| Lot Description | Back Lane, Landscaped, Street |
| Roof | Asphalt Shingle |
| Construction | Mixed |
| Foundation | Poured Concrete |



Additional Information

| | |
|----------------|-----------------|
| Date Listed | July 11th, 2025 |
| Days on Market | 3 |
| Zoning | R-LD |

Listing Details

| | |
|----------------|-------------------------------|
| Listing Office | ROYAL LEPAGE COMMUNITY REALTY |
|----------------|-------------------------------|

Data is supplied by Pillar 9â„¢ MLSÂ® System. Pillar 9â„¢ is the owner of the copyright in its MLSÂ® System. Data is deemed reliable but is not guaranteed accurate by Pillar 9â„¢. The trademarks MLSÂ®, Multiple Listing ServiceÂ® and the associated logos are owned by The Canadian Real Estate Association (CREA) and identify the quality of services provided by real estate professionals who are members of CREA. Used under license.