

\$12 - 16, 666 Goddard Avenue Ne, Calgary

MLS® #A2238442

\$12

0 Bedroom, 0.00 Bathroom,
Commercial on 9.90 Acres

Skyline West, Calgary, Alberta

Rare central small bay opportunity in Greenview Industrial Park, bay dimensions are 32' x 125' providing flexibility for a variety of users. Located with a mix of industrial and community amenities with easy access to Mcknight Boulevard, Deerfoot Trail, Edmonton Trail and Centre Street.

Built in 1981

Essential Information

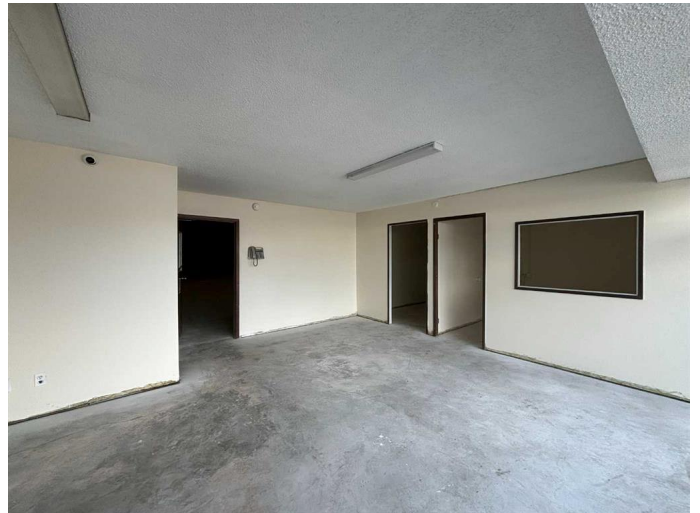
| | |
|------------|------------|
| MLS® # | A2238442 |
| Price | \$12 |
| Bathrooms | 0.00 |
| Acres | 9.90 |
| Year Built | 1981 |
| Type | Commercial |
| Sub-Type | Warehouse |
| Status | Active |

Community Information

| | |
|-------------|---------------------------|
| Address | 16, 666 Goddard Avenue Ne |
| Subdivision | Skyline West |
| City | Calgary |
| County | Calgary |
| Province | Alberta |
| Postal Code | T2K 5X3 |

Amenities

| | |
|----------------|---|
| Parking Spaces | 4 |
|----------------|---|



Additional Information

| | |
|----------------|----------------|
| Date Listed | July 9th, 2025 |
| Days on Market | 10 |
| Zoning | I-G |

Listing Details

| | |
|----------------|----------------------|
| Listing Office | CMS Real Estate Ltd. |
|----------------|----------------------|

Data is supplied by Pillar 9â„¢ MLS® System. Pillar 9â„¢ is the owner of the copyright in its MLS® System. Data is deemed reliable but is not guaranteed accurate by Pillar 9â„¢. The trademarks MLS®, Multiple Listing Service® and the associated logos are owned by The Canadian Real Estate Association (CREA) and identify the quality of services provided by real estate professionals who are members of CREA. Used under license.