

# **\$209,900 - 4, 113040 Township Road 592, Rural Woodlands County**

---

MLS® #A2238524

**\$209,900**

3 Bedroom, 2.00 Bathroom, 1,688 sqft  
Residential on 4.99 Acres

NONE, Rural Woodlands County, Alberta

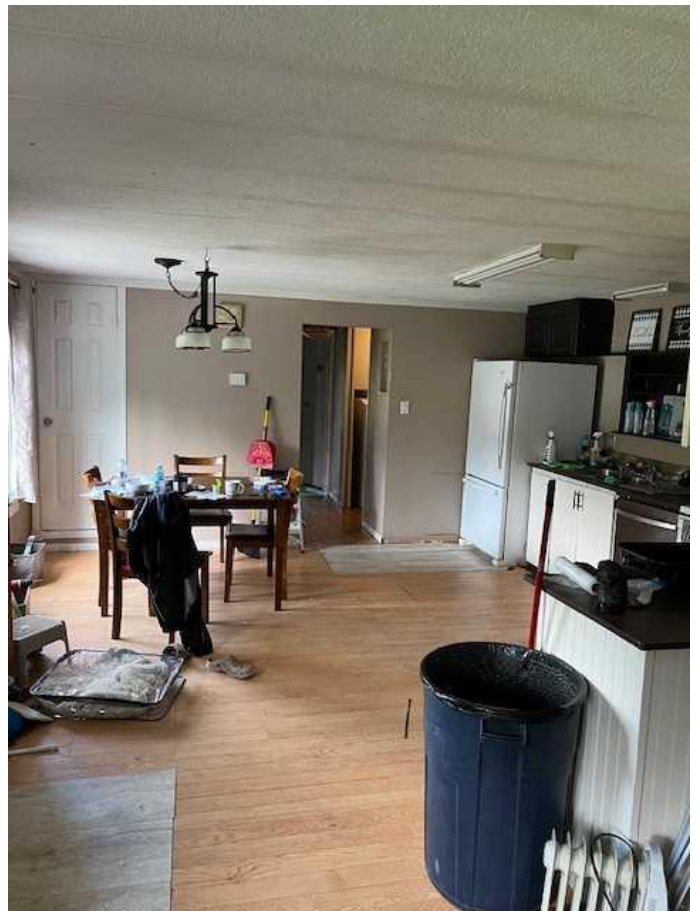
Tranquil Country Retreat - 4.99 Acres Near Whitecourt

Nestled just minutes from Whitecourt, this peaceful sanctuary in the sought-after Pine Meadows Subdivision offers a perfect blend of comfort, privacy, and natural beauty. Set on 4.99 beautifully landscaped acres, this property features a charming 1982 mobile home with a spacious addition, offering ample living space for your family.

The home includes 3 cozy bedrooms and 2 well-appointed bathrooms, making it ideal for everyday living. A wood-burning stove creates a warm, inviting atmosphere, perfect for relaxing on cooler evenings. For those who love the outdoors, a garden spot awaits, while a spring-fed pond adds to the serene, private ambiance of the property.

The expansive yard is impeccably landscaped, offering tranquility and space to roam. Several outbuildings provide excellent storage and workshop potential, while the surrounding peaceful, quiet environment ensures you can unwind and enjoy the beauty of nature in absolute privacy.

This is a rare opportunity to own a private retreat, perfect for anyone seeking a quiet, country lifestyle with easy access to



Whitecourt.

Built in 1982

### Essential Information

MLS® #	A2238524
Price	\$209,900
Bedrooms	3
Bathrooms	2.00
Full Baths	2
Square Footage	1,688
Acres	4.99
Year Built	1982
Type	Residential
Sub-Type	Detached
Style	Acreage with Residence, Single Wide Mobile Home
Status	Active

### Community Information

Address	4, 113040 Township Road 592
Subdivision	NONE
City	Rural Woodlands County
County	Woodlands County
Province	Alberta
Postal Code	T7S 1A1

### Amenities

Parking Spaces	10
Parking	None

### Interior

Interior Features	See Remarks
Appliances	None
Heating	Forced Air, Wood Stove
Cooling	None
Fireplace	Yes
# of Fireplaces	2
Fireplaces	Wood Burning

Basement	None
<b>Exterior</b>	
Exterior Features	None
Lot Description	Landscaped, Low Main Creek/River/Stream/Pond
Roof	Asphalt Shingle
Construction	Wood Frame
Foundation	None

**Additional Information**

Date Listed	July 9th, 2025
Days on Market	16
Zoning	Country Residential

**Listing Details**

Listing Office	EXIT REALTY RESULTS
----------------	---------------------



Data is supplied by Pillar 9â„¢ MLSÂ® System. Pillar 9â„¢ is the owner of the copyright in its MLSÂ® System. Data is deemed reliable but is not guaranteed accurate by Pillar 9â„¢. The trademarks MLSÂ®, Multiple Listing ServiceÂ® and the associated logos are owned by The Canadian Real Estate Association (CREA) and identify the quality of services provided by real estate professionals who are members of CREA. Used under license.