

\$319,900 - 4620 42 Streetcrescent, Red Deer

MLS® #A2238591

\$319,900

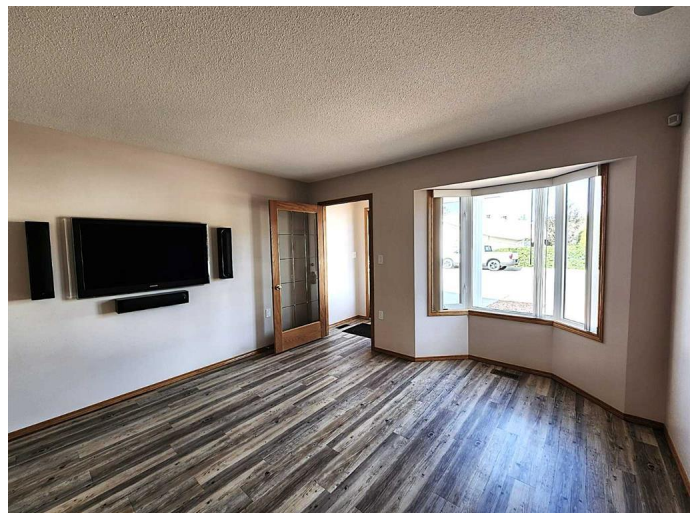
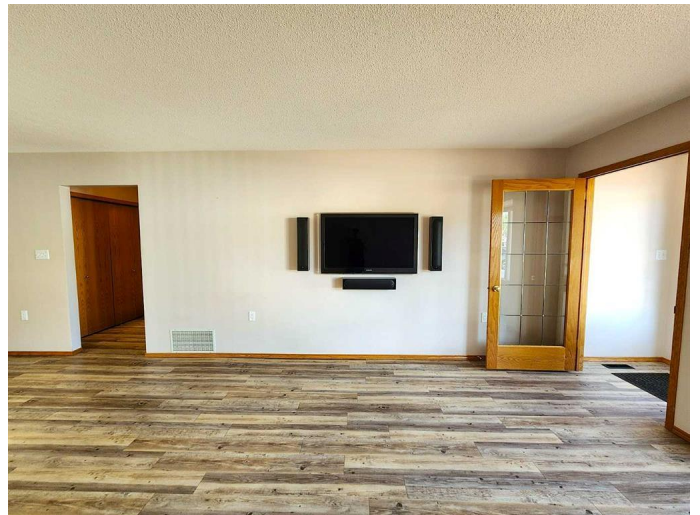
2 Bedroom, 1.00 Bathroom, 1,076 sqft

Residential on 0.08 Acres

Parkvale, Red Deer, Alberta

Rare Property Designed with Easy Level Entry Access(No Stairs), that is just steps from The Golden Circle, Recreation Center Pool, Tennis Courts, and Walking/Bike Trails. This End Unit Townhouse has a Great Open Floor Plan and the Large Windows allow in ample amounts of Natural Sunlight. The Kitchen has plenty of Cabinets, and is Completed with Stainless Steel Appliances. You will love 4 Piece Bathroom with an Oversized Soaker Tub and an Upgrade Low Flush Toto Toilet. Two very good sized Bedrooms, with a Walk In Closet in the Master Bedroom. The Second Bedroom has Garden Doors that give you access to your Covered West Facing Deck, and Perfectly Manicured Back Yard with a Beautifully Kept Flower Garden. There is even a Built-In Garden Shed for Extra Storage. The Garage is Insulated, with Running Water, and has been freshly painted. There are also No Steps from the Garage to the Home. Upgrades Include; Vinyl Plank Flooring, Hi Efficient Furnace(2019), Pex Plumbing(No Poly B), TV with 5.1 Sound System(With Speakers to The Covered Deck), and a Nest Thermostat System. There is also a Central Vacuum System, Freezer and Stacking Wash/Dryer that are included in the price. Located in the Charming Mature Subdivision of Parkvale, makes this Great Home a True Hidden Treasure just waiting for a New Owner.

Built in 1994



Essential Information

| | |
|----------------|---------------|
| MLS® # | A2238591 |
| Price | \$319,900 |
| Bedrooms | 2 |
| Bathrooms | 1.00 |
| Full Baths | 1 |
| Square Footage | 1,076 |
| Acres | 0.08 |
| Year Built | 1994 |
| Type | Residential |
| Sub-Type | Row/Townhouse |
| Style | Bungalow |
| Status | Active |

Community Information

| | |
|-------------|------------------------|
| Address | 4620 42 Streetcrescent |
| Subdivision | Parkvale |
| City | Red Deer |
| County | Red Deer |
| Province | Alberta |
| Postal Code | T4N 6Y6 |

Amenities

| | |
|----------------|--|
| Parking Spaces | 2 |
| Parking | Concrete Driveway, Garage Door Opener, Garage Faces Front, Insulated, Off Street, Single Garage Attached |
| # of Garages | 1 |

Interior

| | |
|-------------------|---|
| Interior Features | Ceiling Fan(s), Central Vacuum, Closet Organizers, No Animal Home, Soaking Tub, Vinyl Windows, Walk-In Closet(s), Wired for Sound |
| Appliances | See Remarks |
| Heating | Forced Air, Natural Gas |
| Cooling | None |
| Has Basement | Yes |
| Basement | None, Crawl Space |

Exterior

| | |
|-------------------|-----------------|
| Exterior Features | Garden, Storage |
|-------------------|-----------------|

| | |
|-----------------|--|
| Lot Description | Back Yard, Cul-De-Sac, Garden, Landscaped, Lawn, Level, Rectangular Lot, Street Lighting |
| Roof | Asphalt Shingle |
| Construction | Vinyl Siding, Wood Frame |
| Foundation | Wood |

Additional Information

| | |
|----------------|-----------------|
| Date Listed | July 10th, 2025 |
| Days on Market | 1 |
| Zoning | R-H |

Listing Details

| | |
|----------------|------------------------------------|
| Listing Office | RE/MAX real estate central alberta |
|----------------|------------------------------------|

Data is supplied by Pillar 9â„¢ MLS® System. Pillar 9â„¢ is the owner of the copyright in its MLS® System. Data is deemed reliable but is not guaranteed accurate by Pillar 9â„¢. The trademarks MLS®, Multiple Listing Service® and the associated logos are owned by The Canadian Real Estate Association (CREA) and identify the quality of services provided by real estate professionals who are members of CREA. Used under license.