

\$265,000 - 10, 29571 Range Road 21, Rural Mountain View County

MLS® #A2239770

\$265,000

0 Bedroom, 0.00 Bathroom,
Land on 2.00 Acres

NONE, Rural Mountain View County, Alberta

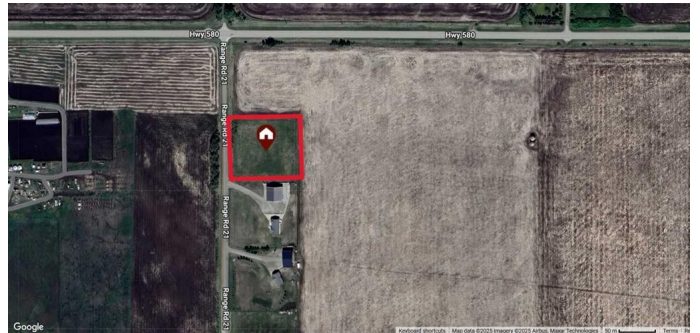
Conveniently located just 8 minutes west of Carstairs, this flat 2-acre parcel offers a producing well and power to the property lineâ€”ready for your dream home. With expansive Alberta prairie views in every direction, you can enjoy the peace and privacy of rural living without sacrificing convenience. There are no building restrictions beyond standard county guidelines, giving you the flexibility to design and build to suit your vision. Access is easy with just a 5-minute drive on pavement to the Queen Elizabeth II Highway, 16 minutes to Crossfield, 24 minutes to Airdrie, and 48 minutes to downtown Calgary. Come take a walk on the land and imagine the possibilitiesâ€”make 10, 29571 Range Road 21, Mountain View County, your next address.

Essential Information

MLS® #	A2239770
Price	\$265,000
Bathrooms	0.00
Acres	2.00
Type	Land
Sub-Type	Residential Land
Status	Active

Community Information

Address 10, 29571 Range Road 21



Subdivision	NONE
City	Rural Mountain View County
County	Mountain View County
Province	Alberta
Postal Code	T4H 4G1

Exterior

Lot Description	Open Lot
-----------------	----------

School Information

District	Chinook's Edge School Division No. 73
----------	---------------------------------------

Additional Information

Date Listed	July 22nd, 2025
Days on Market	5
Zoning	12

Listing Details

Listing Office	RE/MAX Realty Professionals
----------------	-----------------------------

Data is supplied by Pillar 9â„¢ MLS® System. Pillar 9â„¢ is the owner of the copyright in its MLS® System. Data is deemed reliable but is not guaranteed accurate by Pillar 9â„¢. The trademarks MLS®, Multiple Listing Service® and the associated logos are owned by The Canadian Real Estate Association (CREA) and identify the quality of services provided by real estate professionals who are members of CREA. Used under license.