

\$499,900 - 216 Ackerman Crescent, Red Deer

MLS® #A2240197

\$499,900

4 Bedroom, 3.00 Bathroom, 1,237 sqft

Residential on 0.13 Acres

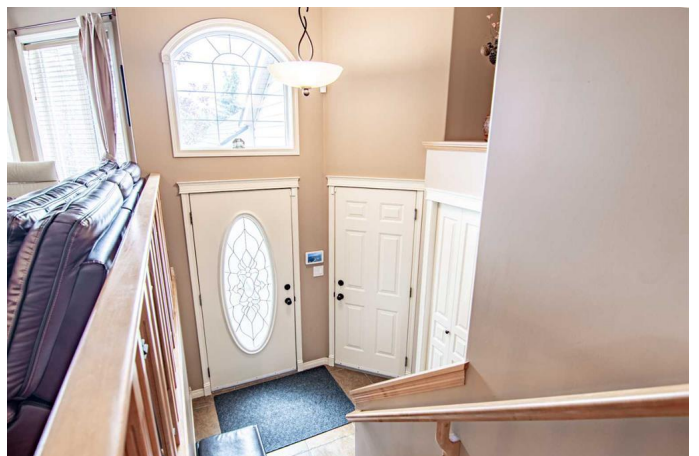
Aspen Ridge, Red Deer, Alberta

Welcome to this fully developed home located in the neighborhood of Aspen Ridge, near a green space. This bi-level property offers 4 bedrooms and 3 bathrooms, and an attached double garage. The main floor features a spacious master bedroom with a 3-piece ensuite, two additional bedrooms, and another full bathroom. You'll also find a beautiful kitchen with maple cabinets, and a living room with a large window and fireplace—perfect for relaxing evenings. The basement includes roughed-in in-floor heating, a large family room and games area, the fourth bedroom, and another full bathroom. Lastly, the fully fenced and attractively landscaped yard can be enjoyed from the concrete patio. Additional highlights include a brand-new washer, shingles and hot water tank replaced within the last five years. Conveniently located near parks and amenities, this is an ideal home for families!

Built in 2003

Essential Information

MLS® #	A2240197
Price	\$499,900
Bedrooms	4
Bathrooms	3.00
Full Baths	3
Square Footage	1,237
Acres	0.13



Year Built	2003
Type	Residential
Sub-Type	Detached
Style	Bi-Level
Status	Active

Community Information

Address	216 Ackerman Crescent
Subdivision	Aspen Ridge
City	Red Deer
County	Red Deer
Province	Alberta
Postal Code	T4R 3E6

Amenities

Parking Spaces	2
Parking	Double Garage Attached, Garage Door Opener, Garage Faces Front
# of Garages	2

Interior

Interior Features	Breakfast Bar, Ceiling Fan(s), Central Vacuum, Open Floorplan, Pantry, Storage, Vaulted Ceiling(s)
Appliances	Dishwasher, Dryer, Garage Control(s), Microwave, Refrigerator, Stove(s), Washer, Window Coverings
Heating	Forced Air, Natural Gas, In Floor Roughed-In
Cooling	None
Fireplace	Yes
# of Fireplaces	1
Fireplaces	Gas, Living Room, Mantle, Oak, Tile
Has Basement	Yes
Basement	Finished, Full

Exterior

Exterior Features	Private Yard
Lot Description	Back Lane, Back Yard, Landscaped
Roof	Asphalt Shingle
Construction	Stone, Vinyl Siding, Wood Frame
Foundation	Poured Concrete

Additional Information

Date Listed	July 16th, 2025
Days on Market	2
Zoning	R-L

Listing Details

Listing Office	Century 21 Maximum
----------------	--------------------

Data is supplied by Pillar 9â„¢ MLSÂ® System. Pillar 9â„¢ is the owner of the copyright in its MLSÂ® System. Data is deemed reliable but is not guaranteed accurate by Pillar 9â„¢. The trademarks MLSÂ®, Multiple Listing ServiceÂ® and the associated logos are owned by The Canadian Real Estate Association (CREA) and identify the quality of services provided by real estate professionals who are members of CREA. Used under license.