

# \$1,165,000 - 1-4, 192 Somerset Way Se, Medicine Hat

MLS® #A2240499

**\$1,165,000**

0 Bedroom, 0.00 Bathroom, 2,720 sqft  
Multi-Family on 0.13 Acres

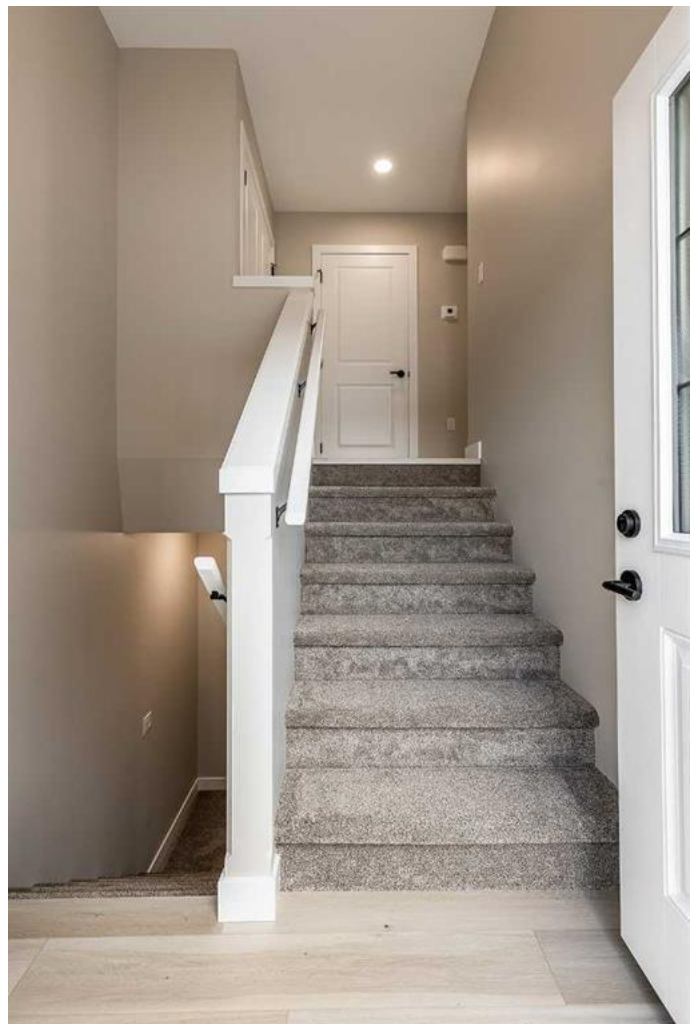
Southland, Medicine Hat, Alberta

Introducing an exceptional investment opportunity in the heart of the city! Welcome to Adorah Homes' latest development featuring a high-end brand new 4 plex in the very family-friendly Southlands neighbourhood! The kitchens exude modern elegance with quartz countertops and stainless steel appliance package. Two units include 3 bedrooms with 2 full bathrooms and two units include 2 bedrooms with 2 full bathrooms. Each unit enjoys its own private, covered deck-perfect for an outdoor living space. Complete with maintenance free landscaping for easy living. Located within walking distance to all amenities such as schools, shopping, restaurants, coffee shops, and scenic walking/biking paths, this property is perfectly positioned for both convenience and lifestyle. Whether you choose to live in one unit and rent out the others or utilize all for rental income. Don't miss out on this chance to secure a modern property in a prime location and explore how this 4 plex can fit your investment and lifestyle goals seamlessly. All measurements are taken from builder blueprints. \*Photos are similar too\*

Built in 2024

## Essential Information

MLS® #	A2240499
Price	\$1,165,000



Bathrooms	0.00
Square Footage	2,720
Acres	0.13
Year Built	2024
Type	Multi-Family
Sub-Type	4 plex
Style	Bi-Level
Status	Active

### **Community Information**

Address	1-4, 192 Somerset Way Se
Subdivision	Southland
City	Medicine Hat
County	Medicine Hat
Province	Alberta
Postal Code	T1B 0B6

### **Amenities**

Parking Spaces	4
----------------	---

### **Interior**

Interior Features	Kitchen Island, Open Floorplan, Quartz Counters, Separate Entrance, Walk-In Closet(s)
Appliances	Dishwasher, Dryer, Microwave Hood Fan, Refrigerator, Stove(s), Washer, Window Coverings
Heating	Forced Air, Natural Gas
Cooling	Central Air
Has Basement	Yes
Basement	Finished, Full

### **Exterior**

Exterior Features	None
Lot Description	Low Maintenance Landscape
Roof	Asphalt Shingle
Construction	Vinyl Siding
Foundation	Poured Concrete

### **Additional Information**

Date Listed	July 18th, 2025
-------------	-----------------

Days on Market 10  
Zoning R-MD

### Listing Details

Listing Office RIVER STREET REAL ESTATE



Data is supplied by Pillar 9â,,ç MLSÂ® System. Pillar 9â,,ç is the owner of the copyright in its MLSÂ® System. Data is deemed reliable but is not guaranteed accurate by Pillar 9â,,ç. The trademarks MLSÂ®, Multiple Listing ServiceÂ® and the associated logos are owned by The Canadian Real Estate Association (CREA) and identify the quality of services provided by real estate professionals who are members of CREA. Used under license.