

\$519,900 - 246 Carry Drive Se, Medicine Hat

MLS® #A2241498

\$519,900

4 Bedroom, 4.00 Bathroom, 2,482 sqft

Residential on 0.15 Acres

Southview-Park Meadows, Medicine Hat, Alberta

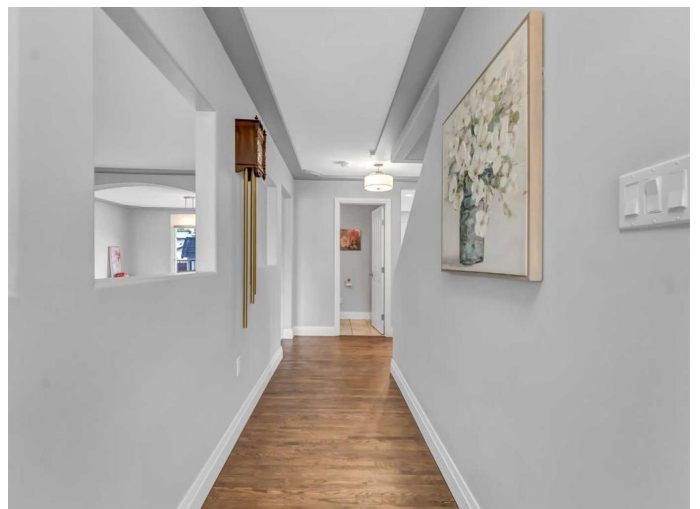
****Welcome Home to Your Family Oasis!****

Nestled in a vibrant community, this stunning two-story home is the perfect blend of space, comfort, and modern living. With over 2,400 sq ft of thoughtfully designed living space plus a fully developed basement, this residence is ideal for families seeking room to grow and thrive. Step inside and be greeted by an expansive layout featuring ****four generously sized bedrooms****, each offering ample closet space and natural light. The heart of the home boasts a ****huge games room**** that flows seamlessly into the adjoining family room, where cozy evenings by the fireplace await you. Imagine gathering with loved ones in these inviting spacesâ€”perfect for both entertaining and relaxation.

Donâ€™t let appearances fool you; this is not your average home! Recently updated throughout, this home features ****real hardwood floors**** and elegant tile on the main and upper levels, while new carpeting in the basement adds warmth underfoot. With ****two full baths**** and ****two half baths****, morning routines will be a breeze for everyone in the family.

Step outside onto your brand-new rear deckâ€”an ideal spot for summer barbecues or simply enjoying your morning coffee while overlooking your spacious backyard.

The double finished detached garage provides plenty of storage or workshop space, complemented by paved off-street parking for



added convenience. Located just moments away from shopping centers, public transit options, scenic trails, and lush parks, this property offers not only a beautiful home but also an active lifestyle at your fingertips. Don't miss out on this exceptional opportunity to own a piece of paradise that truly feels like home! Schedule your private showing today your dream family sanctuary awaits! Now the boring stuff. The house & garage roofs have a new membrane roof, 2 roof top mounted A/C's, Washer/Dryer wifi enabled, shuffleboard & saw in garage included,.

Built in 1976

Essential Information

MLS® #	A2241498
Price	\$519,900
Bedrooms	4
Bathrooms	4.00
Full Baths	2
Half Baths	2
Square Footage	2,482
Acres	0.15
Year Built	1976
Type	Residential
Sub-Type	Detached
Style	2 Storey
Status	Active

Community Information

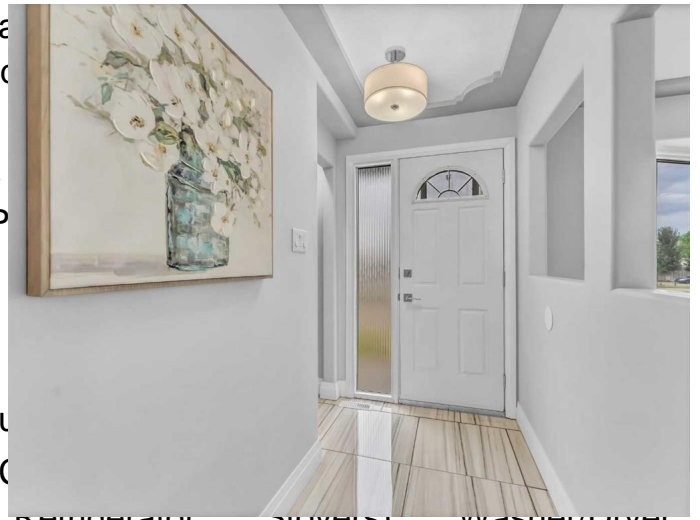
Address	246 Carry Drive Se
Subdivision	Southview-Park Meadows
City	Medicine Hat
County	Medicine Hat
Province	Alberta
Postal Code	T1B 1N5

Amenities

Utilities	Cable Available, Natural Gas Connected, Water Connected
Parking Spaces	4
Parking	Concrete Driveway, Double Heated Garage, Off Street, P
# of Garages	2

Interior

Interior Features	Ceiling Fan(s), Central Vacuum
Appliances	Built-In Oven, Central Air Control(s), Microwave, Refrigerator, Stove(s), Washer/Dryer, Oven-Built-In
Heating	Fireplace(s), Forced Air, Natural Gas
Cooling	Central Air
Fireplace	Yes
# of Fireplaces	2
Fireplaces	Brick Facing, Family Room, Living Room, Wood Burning
Has Basement	Yes
Basement	Finished, Full



Exterior

Exterior Features	None
Lot Description	Back Yard, Corner Lot, Lawn
Roof	Membrane
Construction	Wood Frame
Foundation	Poured Concrete

Additional Information

Date Listed	July 17th, 2025
Days on Market	7
Zoning	R-LD

Listing Details

Listing Office	SOURCE 1 REALTY CORP.
----------------	-----------------------

Data is supplied by Pillar 9â„¢ MLSÂ® System. Pillar 9â„¢ is the owner of the copyright in its MLSÂ® System. Data is deemed reliable but is not guaranteed accurate by Pillar 9â„¢. The trademarks MLSÂ®, Multiple Listing ServiceÂ® and the associated logos are owned by The Canadian Real Estate Association (CREA) and identify the quality of services provided by real estate professionals who are members of CREA. Used under license.