

\$499,900 - 1602 Ashgrove Road S, Lethbridge

MLS® #A2241535

\$499,900

4 Bedroom, 3.00 Bathroom, 1,382 sqft

Residential on 0.16 Acres

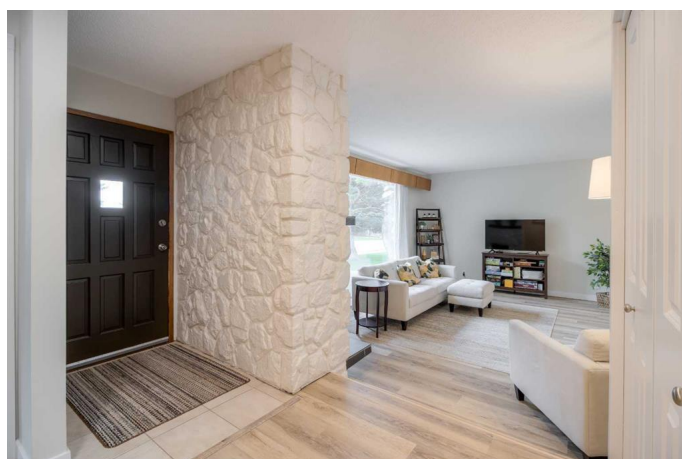
Redwood, Lethbridge, Alberta

Stunning bungalow in a highly desirable area. Close to Redwood park and close to all amenities! 4 bedrooms plus office. Brand new flooring, windows, paint, gourmet kitchen and more. Upstairs has been completely renovated. A rarity to find an almost 1400 sq ft bungalow in a prestige area for under 500k. Fully developed. Inside you'll find two huge bedrooms on the main floor. Spacious kitchen with separate dining area give room for a large or growing family. Tons of parking with carport and super single garage featuring a brand new overhead door. This home needs nothing and is in move in ready condition. If you've been looking for newer homes on the Southside but the lot sizes and yards don't measure up ad this one to your list!

Built in 1971

Essential Information

MLS® #	A2241535
Price	\$499,900
Bedrooms	4
Bathrooms	3.00
Full Baths	3
Square Footage	1,382
Acres	0.16
Year Built	1971
Type	Residential
Sub-Type	Detached



Style	Bungalow
Status	Active

Community Information

Address	1602 Ashgrove Road S
Subdivision	Redwood
City	Lethbridge
County	Lethbridge
Province	Alberta
Postal Code	T1K 3M1

Amenities

Parking Spaces	3
Parking	Off Street, Single Garage Detached
# of Garages	1

Interior

Interior Features	See Remarks
Appliances	Dishwasher, Refrigerator, Stove(s), Washer/Dryer
Heating	Hot Water
Cooling	None
Fireplace	Yes
# of Fireplaces	2
Fireplaces	Electric, Gas
Has Basement	Yes
Basement	Finished, Full

Exterior

Exterior Features	Private Yard
Lot Description	Back Lane
Roof	Membrane
Construction	Stucco, Wood Frame
Foundation	Poured Concrete

Additional Information

Date Listed	July 19th, 2025
Days on Market	3
Zoning	R-L

Listing Details

Data is supplied by Pillar 9â„¸ MLSÂ® System. Pillar 9â„¸ is the owner of the copyright in its MLSÂ® System. Data is deemed reliable but is not guaranteed accurate by Pillar 9â„¸. The trademarks MLSÂ®, Multiple Listing ServiceÂ® and the associated logos are owned by The Canadian Real Estate Association (CREA) and identify the quality of services provided by real estate professionals who are members of CREA. Used under license.