

# \$475,000 - 11306 92a Street, Grande Prairie

MLS® #A2241834

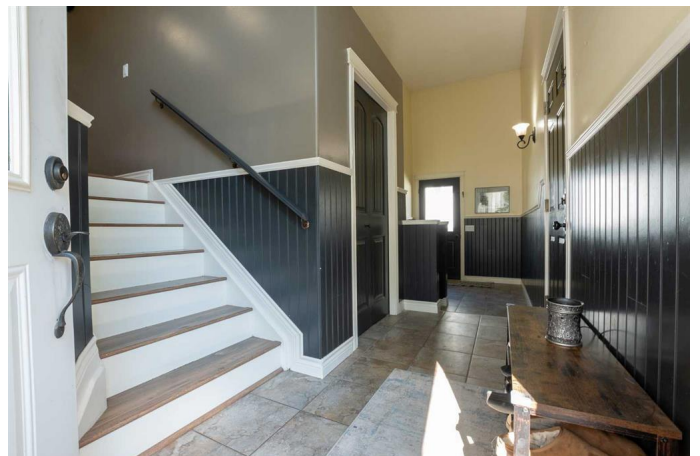
**\$475,000**

5 Bedroom, 3.00 Bathroom, 1,373 sqft

Residential on 0.18 Acres

Summit., Grande Prairie, Alberta

Welcome to this immaculately maintained bi-level home, situated in a quiet cul-de-sac on one of the biggest lots in Summit! This home also backs onto a grassy easement giving you a sense of peace & tranquility. Thoughtfully designed and beautifully finished, this home offers comfort, function, and style. The main level features three spacious bedrooms, including a generous primary suite complete with a walk-in closet and a luxurious ensuite. A bright and open living room provides a welcoming space for gatherings, while the custom-built kitchen showcases a beautiful color palette, quartz countertops, a large island, and ample storage. The formal dining area is filled with natural light from large windows, has custom built-in cabinets, and offers direct access to an oversized deck, ideal for entertaining or relaxing outdoors. The fully developed basement expands your living space with a large rec room, two additional bedrooms, a cold storage room, and a well-equipped laundry/utility area. The highlight is a spa-inspired bathroom retreat featuring heated floors, a massive soaking tub, and a separate stand-up shower. Step outside to your own private oasis complete with mature trees for shade and privacy, open grassy space perfect for kids or the beloved family dog, and a garden shed for additional storage. Additional upgrades include central air conditioning, a newer roof (2023), built-in surround sound, and custom cabinetry. This home is a COMPLETE package & is packed



with value! It is sure to be a crowd favorite!  
Call up for agent & book your showing NOW  
before you miss out on the stunning home.

Built in 1998

### **Essential Information**

MLS® #	A2241834
Price	\$475,000
Bedrooms	5
Bathrooms	3.00
Full Baths	3
Square Footage	1,373
Acres	0.18
Year Built	1998
Type	Residential
Sub-Type	Detached
Style	Bi-Level
Status	Active

### **Community Information**

Address	11306 92a Street
Subdivision	Summit.
City	Grande Prairie
County	Grande Prairie
Province	Alberta
Postal Code	T8V 7E7

### **Amenities**

Parking Spaces	4
Parking	Double Garage Attached
# of Garages	2

### **Interior**

Interior Features	Kitchen Island, Quartz Counters, Storage, Walk-In Closet(s)
Appliances	Dishwasher, Refrigerator, Stove(s), Washer/Dryer
Heating	Forced Air, Natural Gas
Cooling	Central Air
Has Basement	Yes

Basement	Finished, Full
<b>Exterior</b>	
Exterior Features	Other
Lot Description	Back Yard
Roof	Asphalt Shingle
Construction	Vinyl Siding
Foundation	Poured Concrete

**Additional Information**

Date Listed	July 22nd, 2025
Days on Market	2
Zoning	RS

**Listing Details**

Listing Office	RE/MAX Grande Prairie
----------------	-----------------------

Data is supplied by Pillar 9â„¸ MLSÂ® System. Pillar 9â„¸ is the owner of the copyright in its MLSÂ® System. Data is deemed reliable but is not guaranteed accurate by Pillar 9â„¸. The trademarks MLSÂ®, Multiple Listing ServiceÂ® and the associated logos are owned by The Canadian Real Estate Association (CREA) and identify the quality of services provided by real estate professionals who are members of CREA. Used under license.