

\$477,000 - 1217 Southshore Drive, Canyon Creek

MLS® #A2241860

\$477,000

4 Bedroom, 2.00 Bathroom, 2,211 sqft

Residential on 1.00 Acres

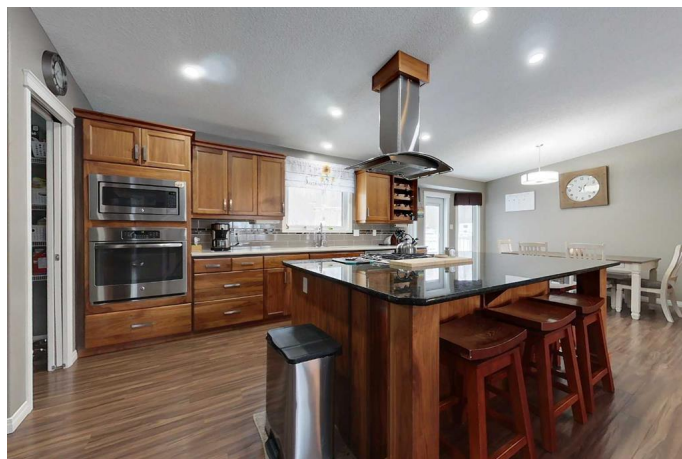
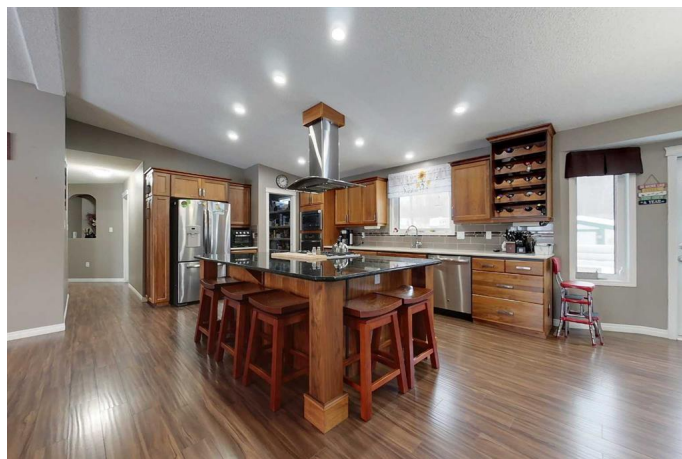
NONE, Canyon Creek, Alberta

Spacious bungalow! Over 2100 sq. ft. nicely maintained home perfect for a growing family! This home features an open floor plan, kitchen with granite and quartz counter tops, a huge island with counter top gas cook stove and breakfast nook, built-in oven and microwave, beautiful maple cabinets with built-in wine rack, large walk through pantry, spacious dining area and large living room. The family room features a gas fireplace making this room on those cold winter nights! 4 nice size bedrooms, primary features a huge walk-in closet with built-in drawers, the spacious ensuite with large jacuzzi tub, separate shower, large vanity with 2 sinks. Additional 4-pc bathroom completes this home. Outdoors features a large south facing sundeck. Located in the quiet Hamlet of Canyon Creek just minutes from the boat launch on one of Alberta's nicest lakes where you can enjoy fishing, boating and beautiful sunsets!!

Built in 2015

Essential Information

MLS® #	A2241860
Price	\$477,000
Bedrooms	4
Bathrooms	2.00
Full Baths	2
Square Footage	2,211



Acres	1.00
Year Built	2015
Type	Residential
Sub-Type	Detached
Style	Bungalow, Acreage with Residence
Status	Active

Community Information

Address	1217 Southshore Drive
Subdivision	NONE
City	Canyon Creek
County	Lesser Slave River No. 124, M.D. of
Province	Alberta
Postal Code	T0G 0M0

Amenities

Parking	Parking Pad
---------	-------------

Interior

Interior Features	Breakfast Bar, Closet Organizers, Granite Counters, High Ceilings, Kitchen Island, Open Floorplan, Pantry, Quartz Counters, Vinyl Windows
Appliances	Dishwasher, Dryer, Microwave, Refrigerator, Washer, Gas Cooktop
Heating	Floor Furnace, Natural Gas
Cooling	None
Fireplace	Yes
# of Fireplaces	1
Fireplaces	Family Room, Gas Log
Basement	None

Exterior

Exterior Features	Garden, Storage
Lot Description	Back Yard, Few Trees, Front Yard, Garden, Lawn
Roof	Asphalt Shingle
Construction	Metal Frame, Wood Siding
Foundation	Piling(s)

Additional Information

Date Listed	July 19th, 2025
Days on Market	1

Zoning

HR

Listing Details

Listing Office

ROYAL LEPAGE PROGRESSIVE REALTY

Data is supplied by Pillar 9â„¢ MLS® System. Pillar 9â„¢ is the owner of the copyright in its MLS® System. Data is deemed reliable but is not guaranteed accurate by Pillar 9â„¢. The trademarks MLS®, Multiple Listing Service® and the associated logos are owned by The Canadian Real Estate Association (CREA) and identify the quality of services provided by real estate professionals who are members of CREA. Used under license.