

\$329,900 - 2, 213 Silkstone Road W, Lethbridge

MLS® #A2243140

\$329,900

3 Bedroom, 3.00 Bathroom, 1,239 sqft

Residential on 0.28 Acres

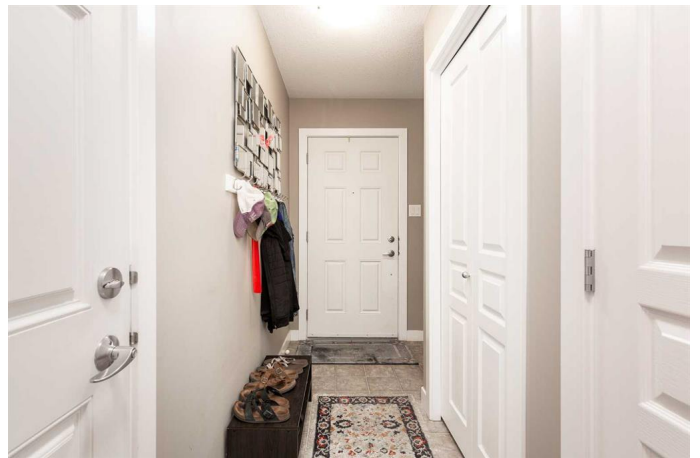
Copperwood, Lethbridge, Alberta

Welcome to 213 Silkstone Rd W #2, this unit welcomes you with open concept living. an attached garage that you won't need to worry about somebody parking in your spot. 3 GREAT sized bedrooms upstairs. And a basement that you can entertain with. The community of copperwood has been a desirable location since its inception with many parks, an elementary school, walking paths. One last bit of info that may peak your interest. These condos come with a community dining room that you can book AND a work out center!

Built in 2011

Essential Information

MLS® #	A2243140
Price	\$329,900
Bedrooms	3
Bathrooms	3.00
Full Baths	2
Half Baths	1
Square Footage	1,239
Acres	0.28
Year Built	2011
Type	Residential
Sub-Type	Row/Townhouse
Style	2 Storey
Status	Active



Community Information

Address	2, 213 Silkstone Road W
Subdivision	Copperwood
City	Lethbridge
County	Lethbridge
Province	Alberta
Postal Code	T1J 4J9

Amenities

Amenities	Clubhouse, Parking, Fitness Center
Parking Spaces	2
Parking	Single Garage Attached
# of Garages	1

Interior

Interior Features	Kitchen Island, Laminate Counters, No Smoking Home, Open Floorplan, Sump Pump(s), Vinyl Windows
Appliances	None
Heating	Forced Air
Cooling	None
Has Basement	Yes
Basement	Partial, Partially Finished

Exterior

Exterior Features	Barbecue, BBQ gas line, Lighting, Private Entrance
Lot Description	Few Trees, Landscaped
Roof	Asphalt Shingle
Construction	Vinyl Siding
Foundation	Poured Concrete

Additional Information

Date Listed	July 25th, 2025
Days on Market	1
Zoning	R-75

Listing Details

Listing Office	Lethbridge Real Estate.com
----------------	----------------------------

Data is supplied by Pillar 9â„¢ MLS® System. Pillar 9â„¢ is the owner of the copyright in its MLS® System. Data is deemed reliable but is not guaranteed accurate by Pillar 9â„¢. The trademarks MLS®, Multiple Listing Service® and the associated logos are owned by The Canadian Real Estate Association (CREA) and identify the quality of services

provided by real estate professionals who are members of CREA. Used under license.