

# \$649,900 - 392 Whiteland Drive Ne, Calgary

MLS® #A2243159

**\$649,900**

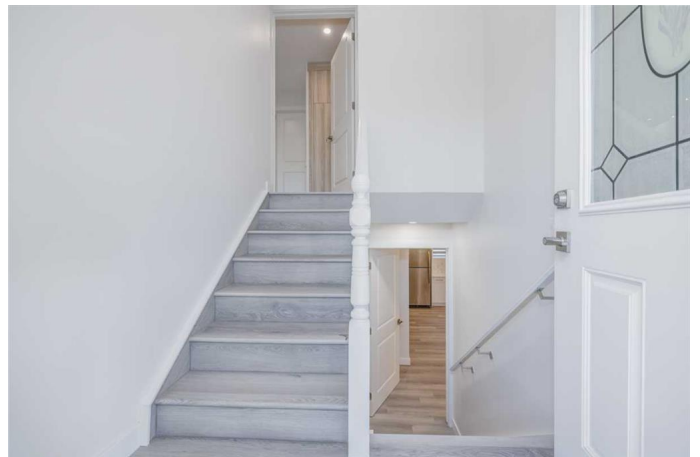
5 Bedroom, 3.00 Bathroom, 1,059 sqft

Residential on 0.10 Acres

Whitehorn, Calgary, Alberta

| NEWLY RENOVATED | SUITED | 5 BEDS |  
2.5 BATHS | DOUBLE DETACHED GARAGE

| Welcome to this newly renovated bi-level home located in the community of Whitehorn. Offering 5 bedrooms and 2.5 bathrooms, this home features a bright and open main living area with large bay windows that fill the space with natural light. The kitchen includes brand new stainless steel appliances, quartz countertops, soft-close cabinetry, and a door that leads directly to the outside. The entire home is finished with vinyl plank flooring and modern pot lights for a fresh, updated feel. On the main floor, you'll find 3 good-sized bedrooms, including a primary bedroom with its own private 2-piece ensuite, and a full 4-piece bathroom. The lower level includes a separate entrance, laundry, a second kitchen, 2 additional good-sized bedrooms, and another full 4-piece bathroom. Enjoy summer evenings on the large deck and take advantage of the double detached garage. Located close to parks, schools, transit, shopping, and more. Call your favourite agent for a showing today!



Built in 1977

## Essential Information

MLS® #	A2243159
Price	\$649,900
Bedrooms	5

Bathrooms	3.00
Full Baths	2
Half Baths	1
Square Footage	1,059
Acres	0.10
Year Built	1977
Type	Residential
Sub-Type	Detached
Style	Bi-Level
Status	Active

### **Community Information**

Address	392 Whiteland Drive Ne
Subdivision	Whitehorn
City	Calgary
County	Calgary
Province	Alberta
Postal Code	T1Y 3M7

### **Amenities**

Parking Spaces	2
Parking	Double Garage Detached
# of Garages	2

### **Interior**

Interior Features	See Remarks
Appliances	Dishwasher, Dryer, Refrigerator, Stove(s), Washer
Heating	Forced Air
Cooling	None
Fireplace	Yes
# of Fireplaces	1
Fireplaces	Electric
Has Basement	Yes
Basement	Exterior Entry, Finished, Full, Suite

### **Exterior**

Exterior Features	Other
Lot Description	Back Lane, Rectangular Lot
Roof	Asphalt Shingle

Construction	Wood Frame
Foundation	Poured Concrete

**Additional Information**

Date Listed	July 25th, 2025
Days on Market	2
Zoning	R-CG

**Listing Details**

Listing Office	eXp Realty
----------------	------------

Data is supplied by Pillar 9â„¢ MLS® System. Pillar 9â„¢ is the owner of the copyright in its MLS® System. Data is deemed reliable but is not guaranteed accurate by Pillar 9â„¢. The trademarks MLS®, Multiple Listing Service® and the associated logos are owned by The Canadian Real Estate Association (CREA) and identify the quality of services provided by real estate professionals who are members of CREA. Used under license.