

# \$500,000 - 5435 Valentine Crescent Se, Calgary

MLS® #A2243198

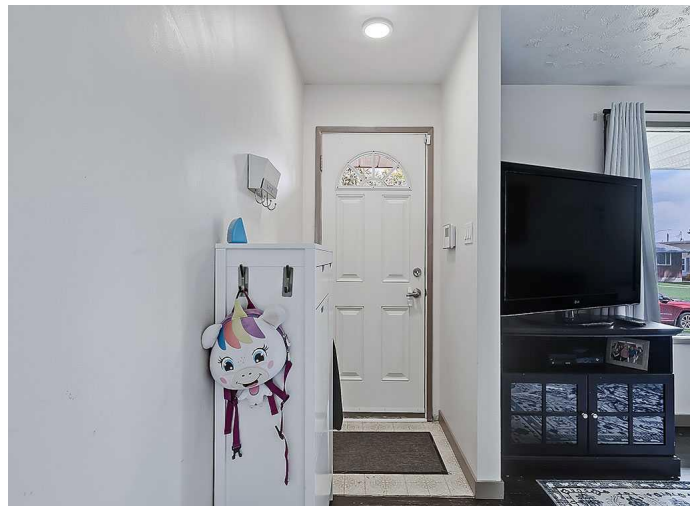
**\$500,000**

5 Bedroom, 2.00 Bathroom, 1,084 sqft  
Residential on 0.14 Acres

Penbrooke Meadows, Calgary, Alberta

**\*OPEN HOUSE Sunday July 27, 2:00-4:00pm\***

Welcome to Valentine Crescent! Offered for the first time on the market in decades, this perfect example of a solid mid-century bungalow has so much to offer its new owners including an illegal SUITE in the basement! Situated on a large rectangular lot offering both a beautiful front and back yard, the upper level of this charming home features original red oak hardwood floors, a renovated bathroom, 3 full bedrooms and a suite of stainless steel appliances in the kitchen. Below, and accessed by a SEPARATE ENTRANCE from the rear/backyard door, a SECOND FULL KITCHEN is found (including dishwasher!), along with two more spacious bedrooms and a large living room in between. Note that NEW Washer and Dryer have just been installed. Live up and rent below, or this could be an ideal set up for other family members looking to downsize and share living costs. The massive backyard not only has plenty of room to enjoy everything Calgary's weather has to offer, but you'll also find a mechanic's dream garage! This HEATED 26x24 oversized double car garage is the perfect spot to safely park your rides or work on those projects. A large parking area right next to it is ideal for additional vehicles or even an RV or boat. Located only steps away from the many shops and restaurants of 17th/International Ave, and walking distance to schools and even beautiful Elliston Park, you'll love being able to



watch the yearly fireworks of GlobalFest so close to home! This home will NOT last so be sure to visit as soon as you can!

Built in 1960

**Essential Information**

MLS® #	A2243198
Price	\$500,000
Bedrooms	5
Bathrooms	2.00
Full Baths	2
Square Footage	1,084
Acres	0.14
Year Built	1960
Type	Residential
Sub-Type	Detached
Style	Bungalow
Status	Active

**Community Information**

Address	5435 Valentine Crescent Se
Subdivision	Penbrooke Meadows
City	Calgary
County	Calgary
Province	Alberta
Postal Code	T2A 2K8

**Amenities**

Parking Spaces	4
Parking	Alley Access, Double Garage Detached, Garage Door Opener, Garage Faces Rear, Oversized, RV Access/Parking, See Remarks, Stall
# of Garages	2

**Interior**

Interior Features	See Remarks
Appliances	Dishwasher, Dryer, Electric Stove, Refrigerator, Washer
Heating	Forced Air
Cooling	None

Has Basement	Yes
Basement	Exterior Entry, Finished, Full, Suite

## Exterior

Exterior Features	Private Yard
Lot Description	Back Lane, Back Yard, Lawn, Level, Rectangular Lot
Roof	Asphalt Shingle
Construction	Wood Frame
Foundation	Poured Concrete

## Additional Information

Date Listed	July 25th, 2025
Days on Market	2
Zoning	R-CG

## Listing Details

Listing Office	Stonemere Real Estate Solutions
----------------	---------------------------------

Data is supplied by Pillar 9â„¢ MLSÂ® System. Pillar 9â„¢ is the owner of the copyright in its MLSÂ® System. Data is deemed reliable but is not guaranteed accurate by Pillar 9â„¢. The trademarks MLSÂ®, Multiple Listing ServiceÂ® and the associated logos are owned by The Canadian Real Estate Association (CREA) and identify the quality of services provided by real estate professionals who are members of CREA. Used under license.