

# \$399,900 - 132 Shacker Crescent, Hanna

MLS® #A2243487

**\$399,900**

5 Bedroom, 3.00 Bathroom, 1,176 sqft

Residential on 0.14 Acres

NONE, Hanna, Alberta

This spacious and meticulously maintained 4-level split home has seen extensive updates throughout, making it truly move-in ready. Situated in one of Hanna's most sought-after neighborhoods, this stunning property offers both modern style and exceptional functionality for families of all sizes. Step inside to find beautiful bamboo flooring, fresh professional paint completed in July 2025, and an abundance of natural light from floor-to-ceiling windows in the living room, elegantly finished with custom Hunter Douglas blinds. The updated kitchen is a chef's dream with modern appliances, tons of cabinetry, and sleek countertops. The bathrooms have been fully renovated, featuring luxurious marble counters and stylish new fixtures. Upstairs, you'll find three generously sized bedrooms, including a primary suite with a walk-in closet and private 3-piece ensuite. The additional bedrooms share a beautifully updated bathroom with brand-new flooring. The third level offers a spacious family room complete with a cozy gas fireplace, a fourth bedroom, and another 3-piece bathroom. This level also provides access to the attached garage, which boasts a newly finished epoxy floor and built-in heavy-duty cabinetry—perfect for storage, hobbies, or even a workshop setup. The lower level includes a fifth bedroom, an office, a large utility/laundry room with cold storage, and even more space for growing families or guests. Enjoy comfort year-round with central



air and upgraded mechanical systems including a newer roof, windows, hot water tank, and furnace. Outside, the fully fenced yard is a peaceful retreat, featuring underground sprinklers (front and back), low-maintenance composite decking, privacy fencing, garden beds, and mature trees. One of the standout features of this property is the charming “She Shed” complete with a golf cart-sized garage door and a loft space ideal for extra storage or fun sleepovers for the kids. Homes like this, with such a rare combination of space, quality updates, and prime location, don’t come along often. Don’t miss your chance”book your showing today!

Built in 1983

**Essential Information**

MLS® #	A2243487
Price	\$399,900
Bedrooms	5
Bathrooms	3.00
Full Baths	3
Square Footage	1,176
Acres	0.14
Year Built	1983
Type	Residential
Sub-Type	Detached
Style	4 Level Split
Status	Active

**Community Information**

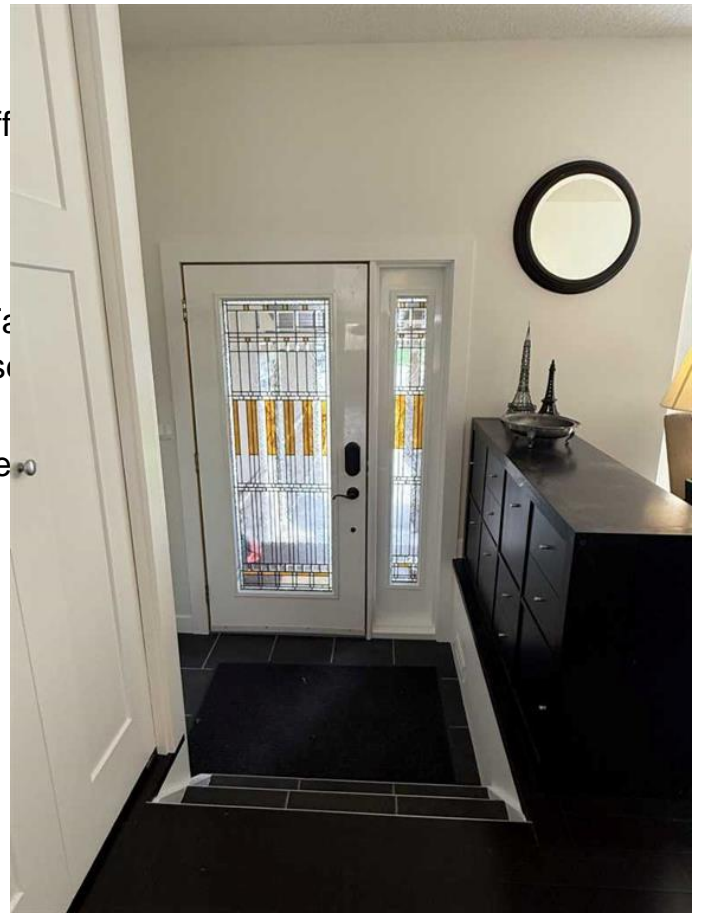
Address	132 Shacker Crescent
Subdivision	NONE
City	Hanna
County	Special Area 2
Province	Alberta
Postal Code	T0J 1P0

## Amenities

Parking Spaces	4
Parking	Double Garage Attached, Off
# of Garages	2

## Interior

Interior Features	Built-in Features, Ceiling Fa Vinyl Windows, Walk-In Close
Appliances	Dishwasher, Microwave Washer/Dryer, Window Coven
Heating	Forced Air
Cooling	Central Air
Fireplace	Yes
# of Fireplaces	1
Fireplaces	Gas
Has Basement	Yes
Basement	Finished, Full



## Exterior

Exterior Features	Garden, Private Yard, Lighting
Lot Description	Back Lane, Back Yard, Front Yard, Garden, Landscaped, Lawn, Underground Sprinklers
Roof	Asphalt Shingle
Construction	Stucco
Foundation	Wood

## Additional Information

Date Listed	July 25th, 2025
Days on Market	1
Zoning	R1

## Listing Details

Listing Office	eXp Realty
----------------	------------

Data is supplied by Pillar 9â„¢ MLSÂ® System. Pillar 9â„¢ is the owner of the copyright in its MLSÂ® System. Data is deemed reliable but is not guaranteed accurate by Pillar 9â„¢. The trademarks MLSÂ®, Multiple Listing ServiceÂ® and the associated logos are owned by The Canadian Real Estate Association (CREA) and identify the quality of services provided by real estate professionals who are members of CREA. Used under license.