

# \$12,000 - 29 Railway Avenue, Endiang

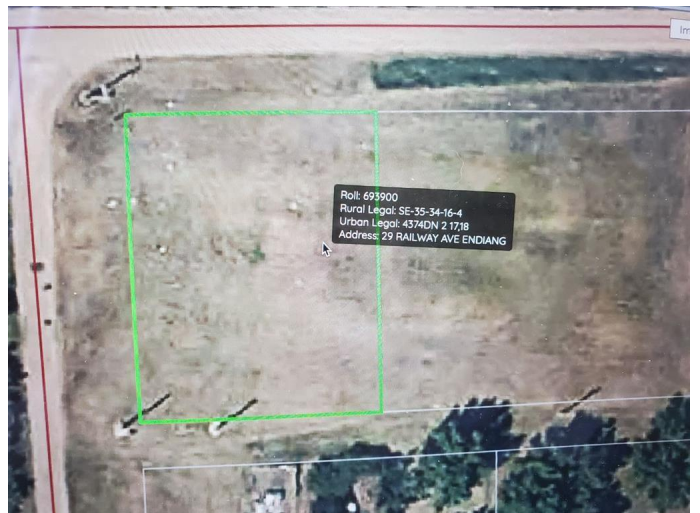
MLS® #A2245260

**\$12,000**

0 Bedroom, 0.00 Bathroom,  
Land on 0.29 Acres

NONE, Endiang, Alberta

Rare opportunity to own a spacious double corner lot in the quiet hamlet of Endiang! Together, these parcels provide an abundance of space with excellent frontage along Railway Avenue. Whether you're looking to build your dream home, move in a modular, or create a large yard with room for a garage or garden, this property offers the flexibility to suit your plans. The corner location provides easy access and adds extra privacy, making it an ideal setting. Endiang is a friendly rural community where you can enjoy peaceful small-town living, open skies, and the slower pace of country life, all while still being within driving distance to amenities in Stettler and the surrounding area.



## Essential Information

MLS® #	A2245260
Price	\$12,000
Bathrooms	0.00
Acres	0.29
Type	Land
Sub-Type	Residential Land
Status	Active

## Community Information

Address	29 Railway Avenue
Subdivision	NONE
City	Endiang

County	Stettler No. 6, County of
Province	Alberta
Postal Code	T0J0L0

### **Additional Information**

Date Listed	August 21st, 2025
Zoning	HC

### **Listing Details**

Listing Office	RE/MAX 1st Choice Realty
----------------	--------------------------

Data is supplied by Pillar 9â„¢ MLS® System. Pillar 9â„¢ is the owner of the copyright in its MLS® System. Data is deemed reliable but is not guaranteed accurate by Pillar 9â„¢. The trademarks MLS®, Multiple Listing Service® and the associated logos are owned by The Canadian Real Estate Association (CREA) and identify the quality of services provided by real estate professionals who are members of CREA. Used under license.