

# \$735,000 - 110 Waterford Road, Chestermere

MLS® #A2245558

**\$735,000**

3 Bedroom, 3.00 Bathroom, 1,911 sqft

Residential on 0.13 Acres

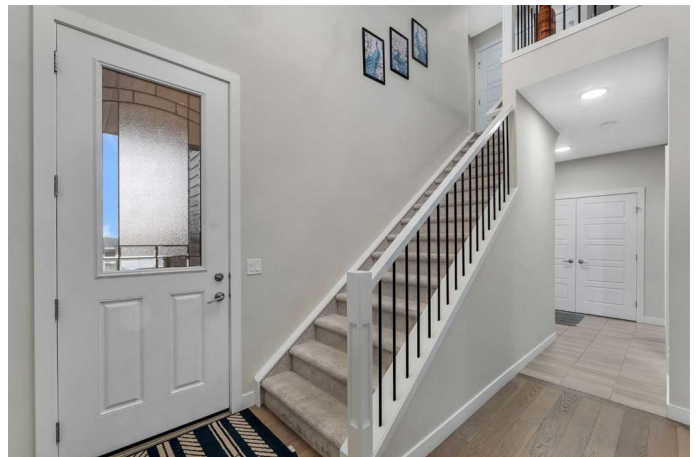
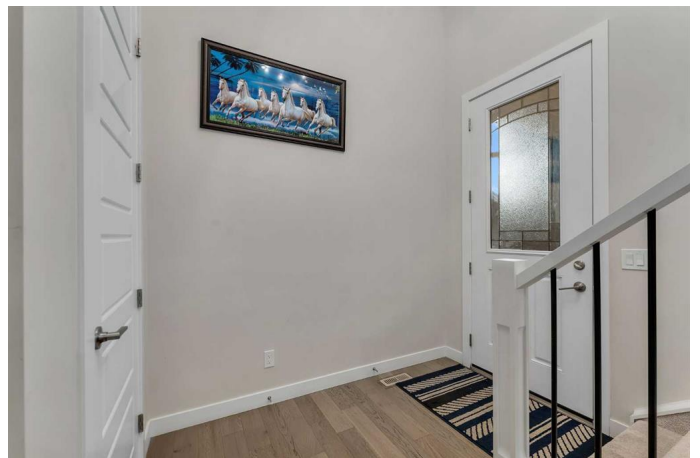
Waterford, Chestermere, Alberta

TRIPLE CAR GARAGE | GREEN SPACE |  
LAKESIDE LIVING | HARDWOOD FLOORS |  
HARDIE BOARD EXTERIOR |

Welcome to your dream home in the sought-after community of Waterford, Chestermere! This beautifully upgraded home offers the perfect blend of functionality, style, and comfort – complete with a rare triple car garage featuring soaring high ceilings, ideal for car lovers, extra storage, or even a workshop.

Backed by lush greenspace and flooded with natural light, this home invites you in through a spacious foyer adorned with elegant wrought iron railings and a custom built-in bench – the perfect spot to welcome guests or settle in after a long day.

The heart of the home features a cozy living room with tiled accents and a striking fireplace, ideal for family movie nights or quiet evenings in. The chef-inspired kitchen boasts an abundance of cabinetry, a generous pantry, stainless steel appliances, and a stunning quartz island that invites conversations over coffee or weekend baking with loved ones. Just off the kitchen is the bright and airy dining room, framed by a large window that overlooks the sun-soaked backyard – perfect for summer BBQs, kids playing, or unwinding with a glass of wine. This floor is further completed by a 2 piece bathroom for added convenience.



Conveniently located off the kitchen, the mudroom keeps life organized with direct access to the spacious triple garage. Upstairs, discover a thoughtfully designed layout featuring three bedrooms, including a massive primary retreat with a luxurious 5-piece ensuite and a generous walk-in closet. A 4-piece bathroom and dedicated laundry room add everyday ease.

The open-to-below concept adds a dramatic, airy feel throughout the home, letting light flow effortlessly from floor to floor. The unfinished basement offers endless potential – whether you envision a home theatre, gym, or extra bedrooms, the space is yours to create.

Located just minutes from the lake, scenic walking paths, playgrounds, and nearby shopping plazas, and with quick access to 17 Ave and Stoney Trail, this home is perfectly positioned for both tranquility and convenience.

Don't miss your chance to make this stunning property your forever home. Book your private showing today!

Built in 2022

**Essential Information**

MLS® #	A2245558
Price	\$735,000
Bedrooms	3
Bathrooms	3.00
Full Baths	2
Half Baths	1
Square Footage	1,911
Acres	0.13
Year Built	2022

Type	Residential
Sub-Type	Detached
Style	2 Storey
Status	Active

### Community Information

Address	110 Waterford Road
Subdivision	Waterford
City	Chestermere
County	Chestermere
Province	Alberta
Postal Code	T1X 2P6

### Amenities

Parking Spaces	6
Parking	Driveway, Garage Door Opener, On Street, Secured, Triple Garage Attached, Covered, Enclosed, Owned, Side By Side
# of Garages	3

### Interior

Interior Features	Closet Organizers, No Animal Home, No Smoking Home, Quartz Counters, Recessed Lighting, See Remarks, Storage, Vinyl Windows
Appliances	Dishwasher, Gas Stove, Microwave Hood Fan, Refrigerator, Washer/Dryer
Heating	Forced Air
Cooling	None
Fireplace	Yes
# of Fireplaces	1
Fireplaces	Electric
Has Basement	Yes
Basement	Full, Unfinished

### Exterior

Exterior Features	Lighting, Private Entrance, Private Yard, Rain Gutters
Lot Description	Back Yard, Landscaped, Low Maintenance Landscape, Private, Street Lighting, City Lot
Roof	Asphalt Shingle
Construction	Cement Fiber Board, Composite Siding, Wood Frame
Foundation	Poured Concrete

**Additional Information**

Date Listed	August 7th, 2025
Days on Market	1
Zoning	RC-1

**Listing Details**

Listing Office	Real Broker
----------------	-------------

Data is supplied by Pillar 9â„¢ MLS® System. Pillar 9â„¢ is the owner of the copyright in its MLS® System. Data is deemed reliable but is not guaranteed accurate by Pillar 9â„¢. The trademarks MLS®, Multiple Listing Service® and the associated logos are owned by The Canadian Real Estate Association (CREA) and identify the quality of services provided by real estate professionals who are members of CREA. Used under license.