

# \$439,000 - 1219 Patricia Street, Jasper

MLS® #A2245666

**\$439,000**

0 Bedroom, 0.00 Bathroom,  
Land on 0.13 Acres

Jasper, Jasper, Alberta

Looking for the perfect piece of land to create your dream home? Look no further! This exceptional lot offers breathtaking views of the stunning South Valley. With approximately 41 feet of frontage, 105 feet in depth, and a generous 63-foot-wide backyard, you'll have plenty of space to design the home you've always imagined.

## Essential Information

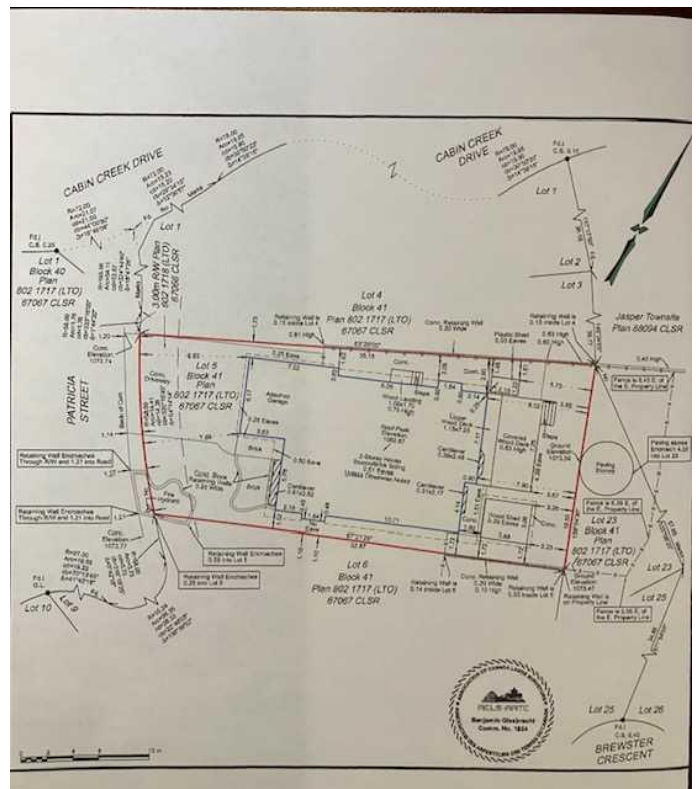
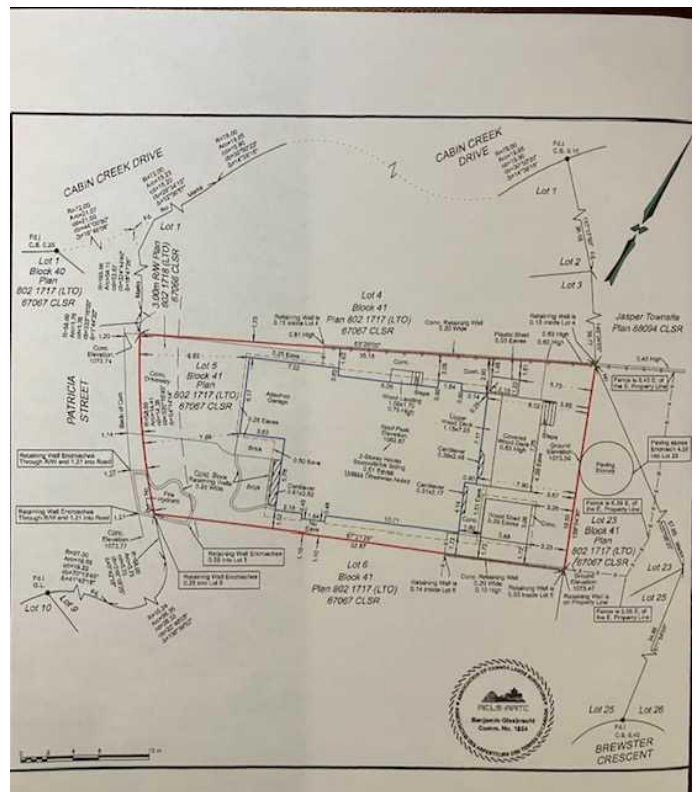
MLS® #	A2245666
Price	\$439,000
Bathrooms	0.00
Acres	0.13
Type	Land
Sub-Type	Residential Land
Status	Active

## Community Information

Address	1219 Patricia Street
Subdivision	Jasper
City	Jasper
County	Jasper, Municipality
Province	Alberta
Postal Code	T0E 1E0

## Additional Information

Date Listed	August 1st, 2025
Days on Market	71



Zoning R1

## **Listing Details**

Listing Office ROYAL LEPAGE SUMMITVIEW REALTY

Data is supplied by Pillar 9â„¸ MLSÂ® System. Pillar 9â„¸ is the owner of the copyright in its MLSÂ® System. Data is deemed reliable but is not guaranteed accurate by Pillar 9â„¸. The trademarks MLSÂ®, Multiple Listing ServiceÂ® and the associated logos are owned by The Canadian Real Estate Association (CREA) and identify the quality of services provided by real estate professionals who are members of CREA. Used under license.