

# \$179,900 - 205, 3910 23 Avenue S, Lethbridge

MLS® #A2249435

**\$179,900**

2 Bedroom, 1.00 Bathroom, 833 sqft

Residential on 0.00 Acres

Redwood, Lethbridge, Alberta

This condo is located in a great area on the Southside and is a short drive to the college (Lethbridge Polytechnic), big box stores, restaurants, grocery stores, and more. The very well maintained unit features a large living room with wood burning fireplace and access to your private, east facing balcony. The galley kitchen provides great functionality with the adjoining dining room being a great space to enjoy your meals. The spacious master/primary bedroom has a walk-thru closet with its own sink. The second bedroom is of good size as well. Next to the 4 piece bathroom is a separate in-suite storage room with lots of shelving. New flooring was installed in most rooms in 2021. New fridge in 2024. This is an ideal investment for a student or a business professional. Although this is unit 205, it's on the same level as the main entrance way - no stairs once you're inside. With no age restrictions and being pet friendly (some restrictions), and having a security system, it's the ideal place to call home. You owe it to yourself to check this one out. Call your favourite REALTOR today to view it!!

Built in 1981

## Essential Information

MLS® #	A2249435
Price	\$179,900
Bedrooms	2



Bathrooms	1.00
Full Baths	1
Square Footage	833
Acres	0.00
Year Built	1981
Type	Residential
Sub-Type	Apartment
Style	Single Level Unit
Status	Active

### **Community Information**

Address	205, 3910 23 Avenue S
Subdivision	Redwood
City	Lethbridge
County	Lethbridge
Province	Alberta
Postal Code	T1K 5H9

### **Amenities**

Amenities	Coin Laundry, Parking, Snow Removal
Parking Spaces	1
Parking	Assigned, Stall

### **Interior**

Interior Features	Storage, Walk-In Closet(s)
Appliances	Dishwasher, Microwave, Refrigerator, Stove(s), Window Coverings
Heating	Baseboard, Hot Water
Cooling	None
Fireplace	Yes
# of Fireplaces	1
Fireplaces	Wood Burning
# of Stories	3

### **Exterior**

Exterior Features	Balcony
Construction	Mixed

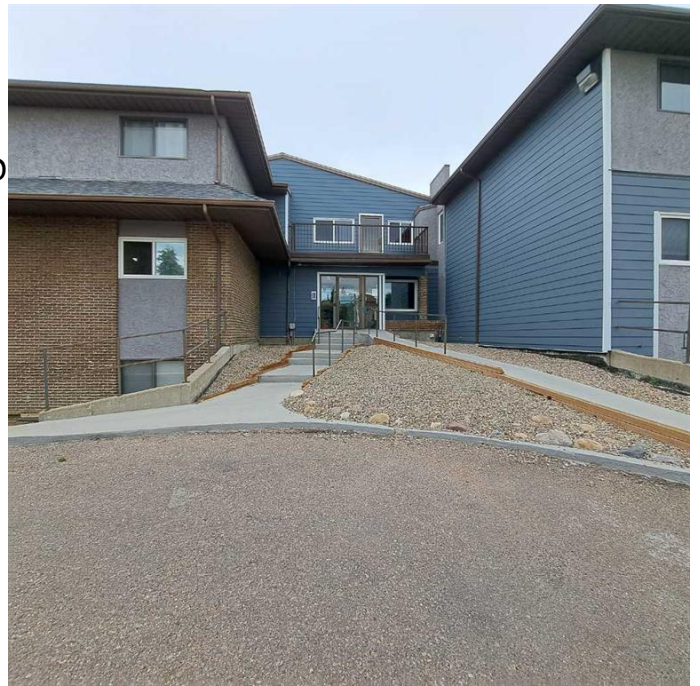
### **Additional Information**

Date Listed	August 18th, 2025
-------------	-------------------

Zoning R-50

## Listing Details

Listing Office SUTTON GROUP - LETHBRIDGE



Data is supplied by Pillar 9â„¢ MLSÂ® System. Pillar 9â„¢ is the owner of the copyright in its MLSÂ® System. Data is deemed reliable but is not guaranteed accurate by Pillar 9â„¢. The trademarks MLSÂ®, Multiple Listing ServiceÂ® and the associated logos are owned by The Canadian Real Estate Association (CREA) and identify the quality of services provided by real estate professionals who are members of CREA. Used under license.