

\$609,000 - 12 Tarington Manor, Calgary

MLS® #A2249458

\$609,000

4 Bedroom, 2.00 Bathroom, 862 sqft

Residential on 0.07 Acres

Taradale, Calgary, Alberta

Welcome to this beautifully maintained bi-level residence offering the perfect blend of comfort, functionality, and convenience. Featuring 4 spacious bedrooms, this home is ideal for growing families, multi-generational living, or savvy investors looking to capitalize on its mortgage-helper potential.

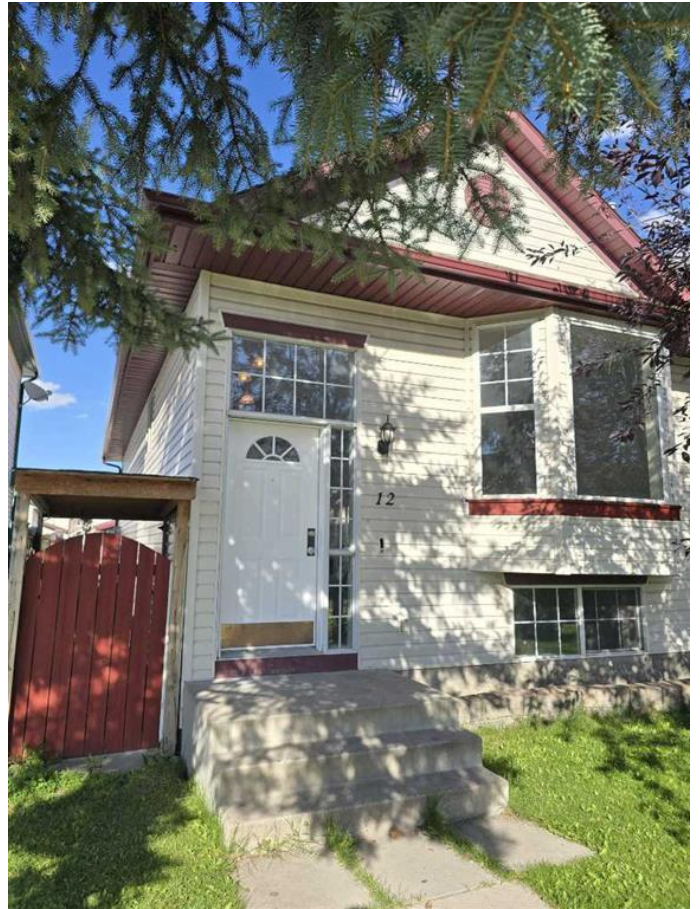
Built in 2002

Essential Information

MLS® #	A2249458
Price	\$609,000
Bedrooms	4
Bathrooms	2.00
Full Baths	2
Square Footage	862
Acres	0.07
Year Built	2002
Type	Residential
Sub-Type	Detached
Style	Bi-Level
Status	Active

Community Information

Address	12 Tarington Manor
Subdivision	Taradale
City	Calgary
County	Calgary
Province	Alberta



Postal Code T3J 4N2

Amenities

Parking Spaces 4
Parking Double Garage Detached, Off Street
of Garages 2

Interior

Interior Features Kitchen Island, No Animal Home, No Smoking Home, Pantry, Storage, Walk-In Closet(s)
Appliances Dishwasher, Electric Stove, Microwave, Refrigerator
Heating Forced Air, Natural Gas
Cooling Central Air
Fireplace Yes
of Fireplaces 1
Fireplaces Gas
Has Basement Yes
Basement Finished, Full

Exterior

Exterior Features Balcony, Lighting, Private Yard
Lot Description Back Lane, Back Yard, Front Yard, Low Maintenance Landscape, Street Lighting
Roof Asphalt Shingle
Construction Vinyl Siding, Wood Frame
Foundation Poured Concrete

Additional Information

Date Listed August 25th, 2025
Days on Market 1
Zoning R-G

Listing Details

Listing Office Five Star Realty

Data is supplied by Pillar 9â„¢ MLS® System. Pillar 9â„¢ is the owner of the copyright in its MLS® System. Data is deemed reliable but is not guaranteed accurate by Pillar 9â„¢. The trademarks MLS®, Multiple Listing Service® and the associated logos are owned by The Canadian Real Estate Association (CREA) and identify the quality of services provided by real estate professionals who are members of CREA. Used under license.