

# \$778,000 - Sw 21-43-1 W5, Rural Ponoka County

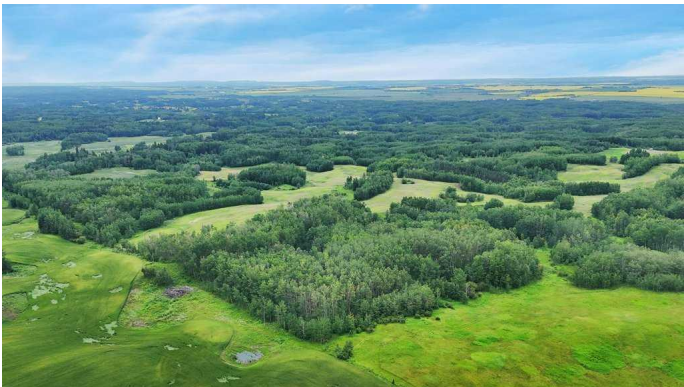
MLS® #A2249647

**\$778,000**

0 Bedroom, 0.00 Bathroom,  
Land on 130.00 Acres

NONE, Rural Ponoka County, Alberta

Welcome to a truly picturesque property nestled in the heartland of Alberta. Spanning 130 acres, this land offers a harmonious blend of rolling hills, open meadows, and treed areas, creating a landscape that is as versatile as it is beautiful. The elevated terrain provides sweeping country views, making it the perfect backdrop for building your dream home, establishing a private retreat, or investing in agricultural or recreational use. With its mix of open and sheltered spaces, the property lends itself to livestock, hobby farming, or simply enjoying the peace and serenity of wide-open spaces. Whether you envision watching the sunrise over the meadows, horseback riding along the hills, or enjoying the tranquility of the treed groves, this acreage offers endless possibilities. This parcel is partially fenced and offers a lease revenue of \$3500, and approx 30 acres of cultivated land.. Seize the opportunity to own a rare piece of Alberta’s countryside – a canvas for your vision, set against the timeless beauty of prairie and sky.



## Essential Information

MLS® #	A2249647
Price	\$778,000
Bathrooms	0.00
Acres	130.00
Type	Land

Sub-Type	Residential Land
Status	Active

### Community Information

Address	Sw 21-43-1 W5
Subdivision	NONE
City	Rural Ponoka County
County	Ponoka County
Province	Alberta
Postal Code	T0C 2J0

### Additional Information

Date Listed	August 18th, 2025
Days on Market	3
Zoning	AG

### Listing Details

Listing Office	CIR Realty
----------------	------------

Data is supplied by Pillar 9â„¢ MLS® System. Pillar 9â„¢ is the owner of the copyright in its MLS® System. Data is deemed reliable but is not guaranteed accurate by Pillar 9â„¢. The trademarks MLS®, Multiple Listing Service® and the associated logos are owned by The Canadian Real Estate Association (CREA) and identify the quality of services provided by real estate professionals who are members of CREA. Used under license.