

\$2,950,000 - 12101 Range Road 64, Rural Cypress County

MLS® #A2251086

\$2,950,000

0 Bedroom, 0.00 Bathroom,
Agri-Business on 144.43 Acres

NONE, Rural Cypress County, Alberta

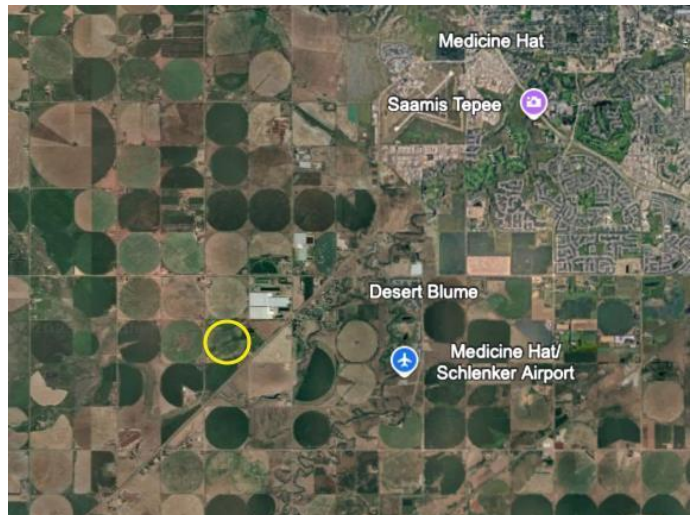
For sale is an exceptional agricultural investment. This 144-acre irrigated parcel includes 142.5 Acres of SMRID Water rights and 7 Tower Valley Pivot. Strategically located just outside the city of Medicine Hat. Premium highway frontage along Highway 3, this property offers excellent accessibility, and convenience for farming operations, transportation, and potential future development. Whether you're an established farmer looking to expand or an investor seeking high-yield land, this turnkey irrigated acreage is ready to deliver outstanding productivity and value.

Essential Information

MLS® #	A2251086
Price	\$2,950,000
Bathrooms	0.00
Acres	144.43
Type	Agri-Business
Sub-Type	Agriculture
Status	Active

Community Information

Address	12101 Range Road 64
Subdivision	NONE
City	Rural Cypress County



County	Cypress County
Province	Alberta
Postal Code	T0K1Z0

Additional Information

Date Listed	August 22nd, 2025
Days on Market	1
Zoning	A1-A2, See Bypass Boundar

Listing Details

Listing Office	CIR REALTY
----------------	------------

Data is supplied by Pillar 9â„¢ MLS® System. Pillar 9â„¢ is the owner of the copyright in its MLS® System. Data is deemed reliable but is not guaranteed accurate by Pillar 9â„¢. The trademarks MLS®, Multiple Listing Service® and the associated logos are owned by The Canadian Real Estate Association (CREA) and identify the quality of services provided by real estate professionals who are members of CREA. Used under license.