

\$525,000 - Unit #d, 47 Ave Bayshore Dr., Sylvan Lake

MLS® #A2252170

\$525,000

0 Bedroom, 0.00 Bathroom,
Land on 3.68 Acres

NONE, Sylvan Lake, Alberta

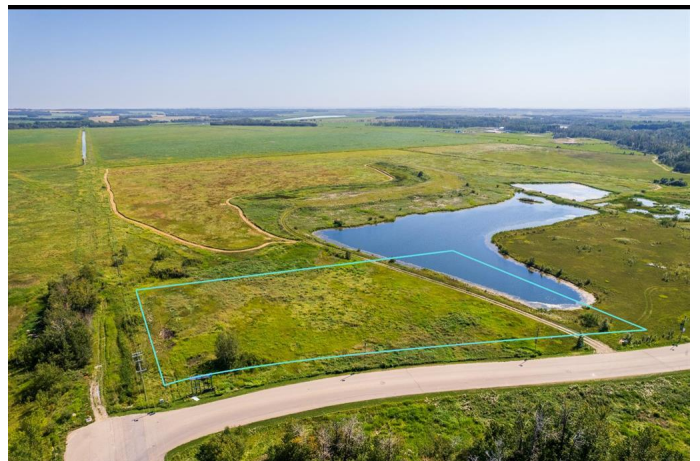
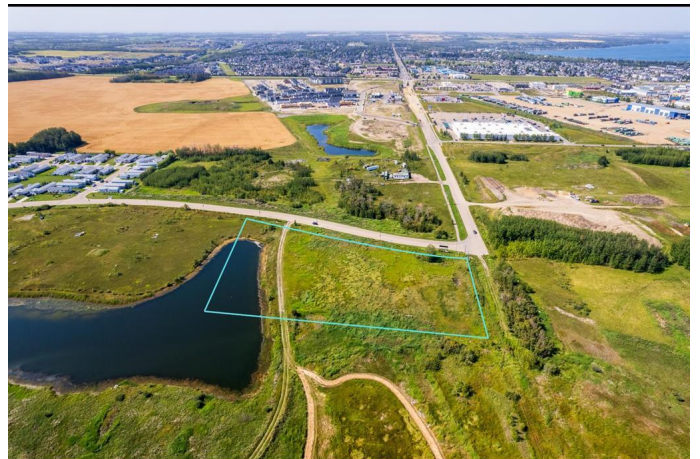
Check out this opportunity to own 3.68 acres of land in one of Alberta's most sought-after lake communities. This property is ideally located near Sylvan Lake's shoreline and amenities, making it the perfect place to bring your vision to life.

Whether you are planning to build your dream home, create a recreational retreat, or explore development options, this parcel offers exceptional potential. Sylvan Lake is a vibrant and growing community, loved for its year-round lifestyle. From boating and beach days in summer to skating, events, and activities in winter.

This is a bare land condominium parcel (Unit D), with no condo association in place and no fees. Zoning is currently RF, and the Town has shown openness to different possibilities.

This is your chance to invest in land that combines natural beauty, recreational living, and strong community growth.

This property is co-listed with Floyd Wierenga from Maxwell Polaris



Essential Information

MLS® #	A2252170
Price	\$525,000

Bathrooms	0.00
Acres	3.68
Type	Land
Sub-Type	Recreational
Status	Active

Community Information

Address	Unit #d, 47 Ave Bayshore Dr.
Subdivision	NONE
City	Sylvan Lake
County	Red Deer County
Province	Alberta
Postal Code	T4S 0A7

Amenities

Amenities	None
-----------	------

Additional Information

Date Listed	August 28th, 2025
Days on Market	3
Zoning	RF

Listing Details

Listing Office	Real Estate Centre - Coaldale
----------------	-------------------------------

Data is supplied by Pillar 9â„¢ MLS® System. Pillar 9â„¢ is the owner of the copyright in its MLS® System. Data is deemed reliable but is not guaranteed accurate by Pillar 9â„¢. The trademarks MLS®, Multiple Listing Service® and the associated logos are owned by The Canadian Real Estate Association (CREA) and identify the quality of services provided by real estate professionals who are members of CREA. Used under license.