

\$250,000 - 123 Waddy Lane, Strathmore

MLS® #A2252431

\$250,000

1 Bedroom, 1.00 Bathroom, 960 sqft
Residential on 0.21 Acres

Downtown_Strathmore, Strathmore, Alberta

This property is being sold as is, where is. Situated on a large lot with plenty of potential, this home offers an excellent opportunity for the right buyer. Conveniently located close to downtown Strathmore, parks, and shopping. Strathmore is a vibrant, fully serviced community featuring schools, amenities, and a hospital.

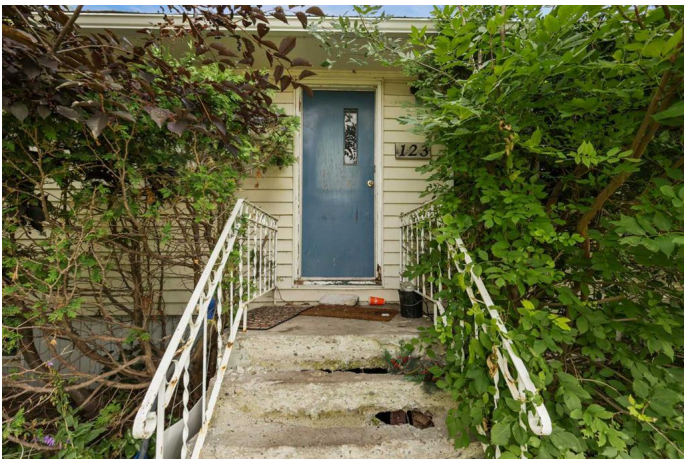
Built in 1959

Essential Information

MLS® #	A2252431
Price	\$250,000
Bedrooms	1
Bathrooms	1.00
Full Baths	1
Square Footage	960
Acres	0.21
Year Built	1959
Type	Residential
Sub-Type	Detached
Style	Bungalow
Status	Active

Community Information

Address	123 Waddy Lane
Subdivision	Downtown_Strathmore
City	Strathmore
County	Wheatland County



Province	Alberta
Postal Code	T1P 1A1

Amenities

Parking Spaces	2
Parking	Double Garage Detached
# of Garages	2

Interior

Interior Features	See Remarks
Appliances	None
Heating	Forced Air, Natural Gas
Cooling	None
Has Basement	Yes
Basement	Full, Unfinished

Exterior

Exterior Features	Other
Lot Description	Back Yard
Roof	Metal
Construction	Vinyl Siding
Foundation	Block

Additional Information

Date Listed	September 19th, 2025
Days on Market	1
Zoning	R1

Listing Details

Listing Office	RE/MAX Key
----------------	------------

Data is supplied by Pillar 9â„¢ MLS® System. Pillar 9â„¢ is the owner of the copyright in its MLS® System. Data is deemed reliable but is not guaranteed accurate by Pillar 9â„¢. The trademarks MLS®, Multiple Listing Service® and the associated logos are owned by The Canadian Real Estate Association (CREA) and identify the quality of services provided by real estate professionals who are members of CREA. Used under license.