

\$450,000 - 120 Shannon Crescent Se, Medicine Hat

MLS® #A2254079

\$450,000

5 Bedroom, 3.00 Bathroom, 1,115 sqft

Residential on 0.16 Acres

SE Southridge, Medicine Hat, Alberta

This inviting bi-level home in sought-after Southridge offers space and comfort. Featuring 5 bedrooms and 3 full bathrooms, it's ideal for families needing room to grow. The main level boasts an open concept kitchen and dining area, highlighted by a large patio door leading to the deck – perfect for barbecues and outdoor entertaining. The cozy living room with a gas fireplace adds warmth and charm. Two bedrooms, including the primary suite with a 4 pc ensuite, plus convenient main-floor laundry, complete the upper level. The fully finished basement provides 3 additional bedrooms, a full bathroom, and a family/games room for relaxing or hosting. The landscaped yard features a recently installed underground sprinkler system, plenty of green space, and a large garden for those who love to grow their own. Some major upgrades in recent years include all new windows (2023), shingles (2018), and the furnace (2021). Complete with an attached double garage. Close to schools, shopping, and parks - this home checks all the boxes for comfort and convenience.

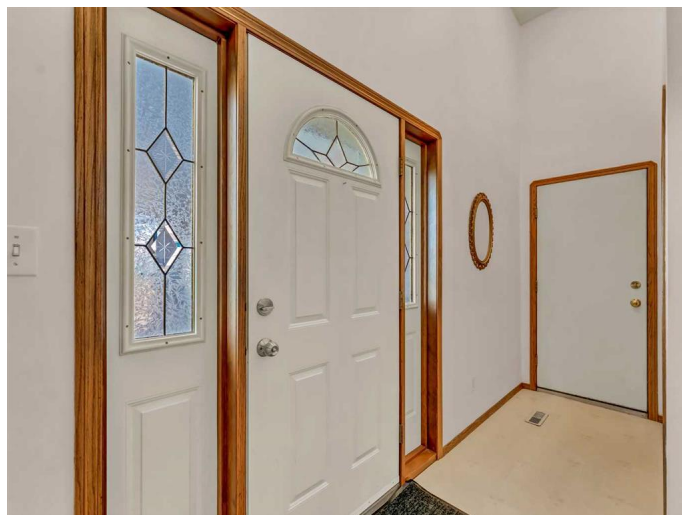
Built in 1996

Essential Information

MLS® # A2254079

Price \$450,000

Bedrooms 5



Bathrooms	3.00
Full Baths	3
Square Footage	1,115
Acres	0.16
Year Built	1996
Type	Residential
Sub-Type	Detached
Style	Bi-Level
Status	Active

Community Information

Address	120 Shannon Crescent Se
Subdivision	SE Southridge
City	Medicine Hat
County	Medicine Hat
Province	Alberta
Postal Code	T1B 4G3

Amenities

Parking Spaces	4
Parking	Double Garage Attached
# of Garages	2

Interior

Interior Features	Vinyl Windows
Appliances	Central Air Conditioner, Dishwasher, Electric Stove, Range Hood, Refrigerator, Washer/Dryer, Window Coverings
Heating	Forced Air
Cooling	Central Air
Fireplace	Yes
# of Fireplaces	1
Fireplaces	Gas
Has Basement	Yes
Basement	Finished, Full

Exterior

Exterior Features	Private Yard
Lot Description	Back Lane, Back Yard, Landscaped, Underground Sprinklers
Roof	Asphalt Shingle

Construction	Brick, Stucco
Foundation	Poured Concrete

Additional Information

Date Listed	September 12th, 2025
Zoning	R-LD

Listing Details

Listing Office	RE/MAX MEDALTA REAL ESTATE
----------------	----------------------------

Data is supplied by Pillar 9â„¢ MLS® System. Pillar 9â„¢ is the owner of the copyright in its MLS® System. Data is deemed reliable but is not guaranteed accurate by Pillar 9â„¢. The trademarks MLS®, Multiple Listing Service® and the associated logos are owned by The Canadian Real Estate Association (CREA) and identify the quality of services provided by real estate professionals who are members of CREA. Used under license.