

\$1,600,000 - 10101 109 Ave, La Crete

MLS® #A2254526

\$1,600,000

0 Bedroom, 0.00 Bathroom,
Land on 18.23 Acres

NONE, La Crete, Alberta

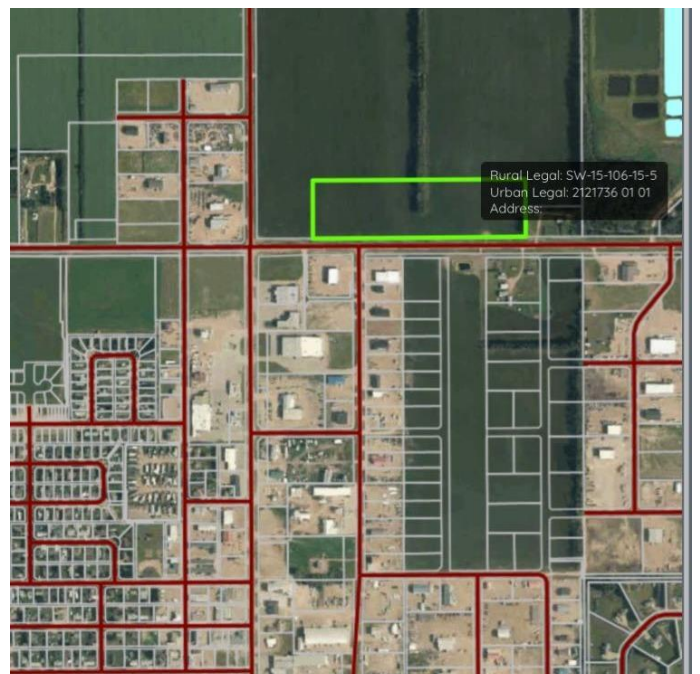
Hereâ€™s your chance to own an incredible piece of commercial land in La Crete! This 18.23-acre parcel sits on the north side of Highway 697, right at the main entrance coming into town, offering unbeatable visibility and access. With La Creteâ€™s booming economy and strong industrial base, the potential here is endlessâ€”develop a hotel, convenience store, retail complex, or other high-demand business venture. Offers 520M of highway frontage, a rare commodity in a growing community like this, and this parcel is truly second to none for future development. Donâ€™t miss the opportunity to invest in one of the most promising commercial sites in the area.

Essential Information

MLS® #	A2254526
Price	\$1,600,000
Bathrooms	0.00
Acres	18.23
Type	Land
Sub-Type	Commercial Land
Status	Active

Community Information

Address	10101 109 Ave
Subdivision	NONE
City	La Crete



County	Mackenzie County
Province	Alberta
Postal Code	T0H2H0

Additional Information

Date Listed	September 5th, 2025
Days on Market	4
Zoning	A

Listing Details

Listing Office	RE/MAX Grande Prairie
----------------	-----------------------

Data is supplied by Pillar 9â„¢ MLS® System. Pillar 9â„¢ is the owner of the copyright in its MLS® System. Data is deemed reliable but is not guaranteed accurate by Pillar 9â„¢. The trademarks MLS®, Multiple Listing Service® and the associated logos are owned by The Canadian Real Estate Association (CREA) and identify the quality of services provided by real estate professionals who are members of CREA. Used under license.