

\$599,900 - 44 Hamptons Crescent Se, Medicine Hat

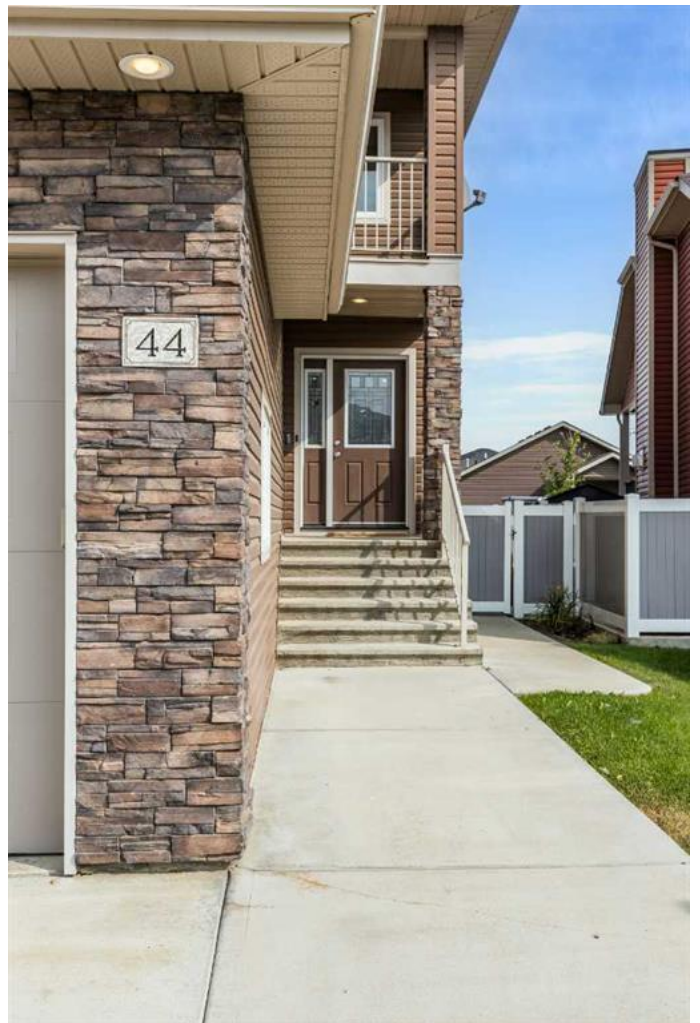
MLS® #A2255228

\$599,900

3 Bedroom, 4.00 Bathroom, 1,701 sqft
Residential on 0.10 Acres

SE Southridge, Medicine Hat, Alberta

Located in the desirable Hamptons community in SE Southridge, this welcoming family home offers high-end features, thoughtful design, and plenty of space for comfortable living. With schools, parks, and shopping nearby, it's the perfect blend of convenience and community. Inside, you're greeted by an open-concept main floor that flows seamlessly for everyday life and entertainment. The kitchen features a walk-through pantry, stainless steel appliances, and durable vinyl flooring. The laundry is conveniently located on the main floor next to the garage entrance. Upstairs, the primary suite stands out with french doors, vaulted ceilings, a 4-piece ensuite with jetted tub, and a walk-through closet. Two additional bedrooms and another full bath complete this level. The fully developed basement expands your living options even further. A stylish dry bar, custom-built entertainment unit, and accent lighting create a cozy atmosphere that's perfect for family movie nights or hosting friends. With the addition of a half bath on this level it's both practical and inviting. Step outside to a spacious backyard with vinyl fencing, underground sprinklers, and a large covered deck with natural gas line. North-facing, it's sheltered from both wind and sun, making it the perfect spot for barbecues and family gatherings. A 2 car attached garage provides added storage and convenience. This home balances family-friendly practicality with high-end



touches. Set in a neighborhood known for its strong sense of community and lifestyle amenities, this property is a wonderful opportunity for anyone looking to put down roots in The Hamptons.

Built in 2014

Essential Information

MLS® #	A2255228
Price	\$599,900
Bedrooms	3
Bathrooms	4.00
Full Baths	2
Half Baths	2
Square Footage	1,701
Acres	0.10
Year Built	2014
Type	Residential
Sub-Type	Detached
Style	2 Storey
Status	Active

Community Information

Address	44 Hamptons Crescent Se
Subdivision	SE Southridge
City	Medicine Hat
County	Medicine Hat
Province	Alberta
Postal Code	T1B0N7

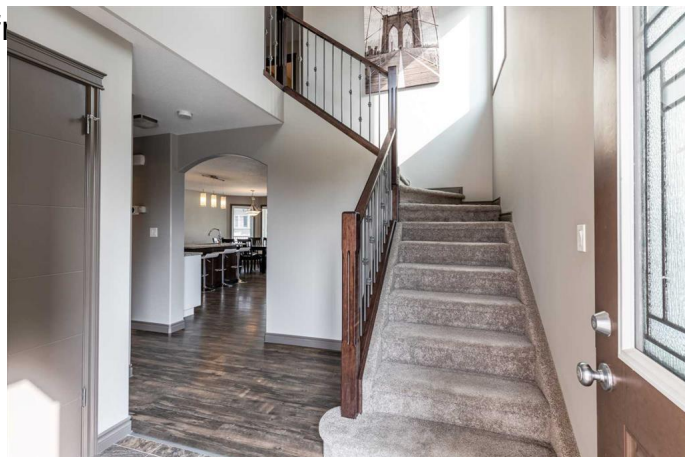
Amenities

Parking Spaces	4
Parking	Double Garage Attached, Driveway
# of Garages	2

Interior

Interior Features	Built-in Features, Granite Counters, High Ceilings, Jetted Tub, Kitchen Island, Open Floorplan, Pantry, Vaulted Ceiling(s), Dry Bar
-------------------	---

Appliances	Dishwasher, Microwave, Ref
Heating	Fireplace(s), Forced Air
Cooling	Central Air
Fireplace	Yes
# of Fireplaces	1
Fireplaces	Gas, Living Room
Has Basement	Yes
Basement	Finished, Full



Exterior

Exterior Features	Balcony, BBQ gas line
Lot Description	Back Yard, Landscaped, Underground Sprinklers
Roof	Asphalt
Construction	Vinyl Siding
Foundation	Poured Concrete

Additional Information

Date Listed	September 9th, 2025
Days on Market	1
Zoning	R-LD

Listing Details

Listing Office	ROYAL LEPAGE COMMUNITY REALTY
----------------	-------------------------------

Data is supplied by Pillar 9â„¢ MLSÂ® System. Pillar 9â„¢ is the owner of the copyright in its MLSÂ® System. Data is deemed reliable but is not guaranteed accurate by Pillar 9â„¢. The trademarks MLSÂ®, Multiple Listing ServiceÂ® and the associated logos are owned by The Canadian Real Estate Association (CREA) and identify the quality of services provided by real estate professionals who are members of CREA. Used under license.