

# \$319,900 - 727 15 Street S, Lethbridge

MLS® #A2255494

**\$319,900**

3 Bedroom, 2.00 Bathroom, 704 sqft

Residential on 0.12 Acres

Victoria Park, Lethbridge, Alberta

Great little revenue property or first-time home! This charming property features a 2-bedroom main floor plus a 1-bedroom illegal basement suite, making it perfect for investors or those looking to offset their mortgage. Updates over the years include windows, flooring, weeping tile, roof, and even solar panels for added efficiency. A shared laundry area provides convenience for both levels, and the single-car garage adds extra value for parking or storage.

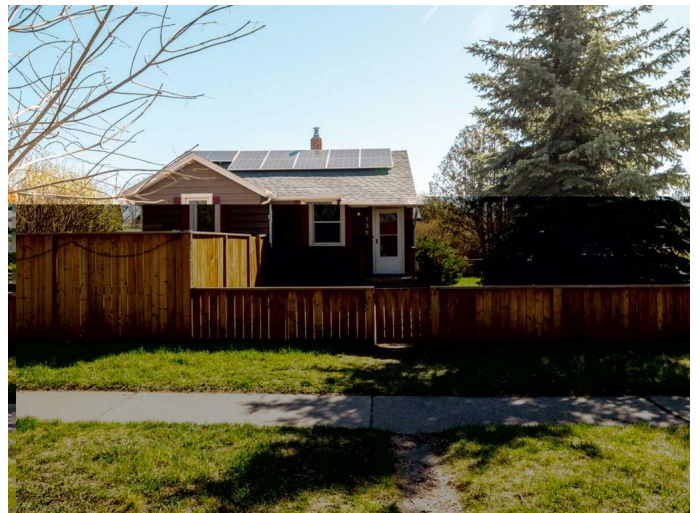
Built in 1943

## Essential Information

MLS® #	A2255494
Price	\$319,900
Bedrooms	3
Bathrooms	2.00
Full Baths	2
Square Footage	704
Acres	0.12
Year Built	1943
Type	Residential
Sub-Type	Detached
Style	Bungalow
Status	Active

## Community Information

Address	727 15 Street S
Subdivision	Victoria Park



City	Lethbridge
County	Lethbridge
Province	Alberta
Postal Code	T1J 3A1

### **Amenities**

Parking Spaces	1
Parking	Single Garage Detached
# of Garages	1

### **Interior**

Interior Features	Solar Tube(s)
Appliances	Dishwasher, Refrigerator, Stove(s), Washer/Dryer
Heating	Forced Air
Cooling	None
Has Basement	Yes
Basement	Finished, Full

### **Exterior**

Exterior Features	None
Lot Description	Back Lane, Corner Lot, Landscaped
Roof	Asphalt Shingle
Construction	Wood Frame, Wood Siding
Foundation	Poured Concrete

### **Additional Information**

Date Listed	September 9th, 2025
Days on Market	1
Zoning	R-L

### **Listing Details**

Listing Office	Grassroots Realty Group
----------------	-------------------------

Data is supplied by Pillar 9â„¢ MLS® System. Pillar 9â„¢ is the owner of the copyright in its MLS® System. Data is deemed reliable but is not guaranteed accurate by Pillar 9â„¢. The trademarks MLS®, Multiple Listing Service® and the associated logos are owned by The Canadian Real Estate Association (CREA) and identify the quality of services provided by real estate professionals who are members of CREA. Used under license.