

# \$585,000 - 143 Manora Drive Ne, Calgary

MLS® #A2255861

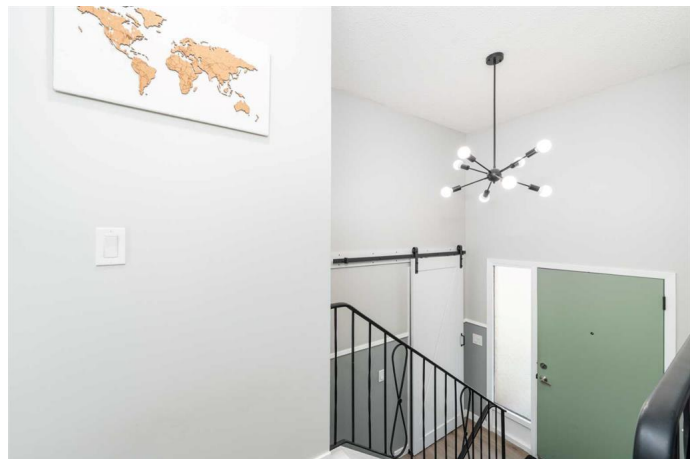
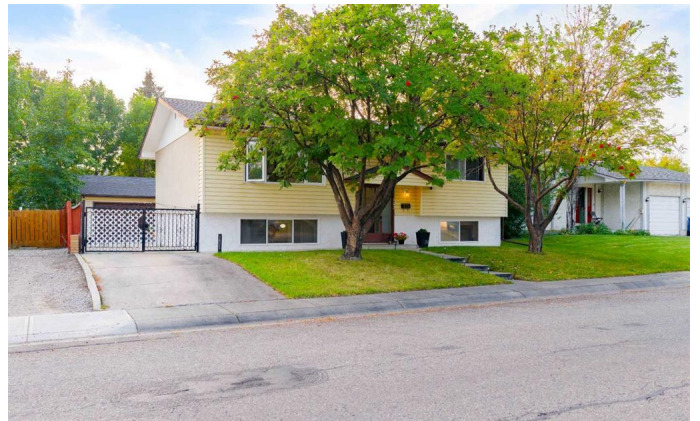
**\$585,000**

4 Bedroom, 2.00 Bathroom, 1,094 sqft

Residential on 0.13 Acres

Marlborough Park, Calgary, Alberta

Welcome to this inviting fully finished, 4 bed, 2 bath bi-level in the established community of Marlborough, offering a practical layout, thoughtful updates, and a property thatâ€™s move-in ready for the next owner. The main floor features a bright open living and dining area, perfect for both relaxing evenings and family gatherings. A large front window brings in natural light, highlighting the neutral tones and durable vinyl plank flooring that run throughout. The kitchen is both stylish and functional, with quartz countertops, stainless steel appliances, and plenty of cabinet spaceâ€”plus room for a breakfast nook where you can enjoy morning coffee or casual meals. This level also offers two spacious bedrooms and a full 4-piece bath. Downstairs, the fully finished basement extends your living space with a large, open recreation room thatâ€™s perfect for movie nights, a games area, or entertaining friends. Youâ€™ll find two additional bedrooms, one of which is currently set up as a home gym, along with a convenient 4-piece bath. A large utility and laundry room offers ample storage, keeping everything organized and tucked away. Step outside and youâ€™ll appreciate the generous lot, with a patio area for summer BBQs, a fire pit for cozy evenings under the stars, and mature trees that create privacy and shade. A handy shed adds storage for tools and gardening supplies. Parking will never be an issue hereâ€”the double detached garage is front-facing with an extra-long driveway that



can accommodate up to six vehicles, ideal for families with multiple cars or guests. Living in Marlborough means enjoying excellent access to all amenities. The community is known for its mature trees, green spaces, and established schools, making it a great place for families. Youâ€™ll find shopping at Marlborough Mall, Pacific Place, and Sunridge Mall, along with countless dining options nearby. Transit is easily accessible, with the Marlborough LRT station just minutes away, and commuting is simple with quick connections to Memorial Drive, 16th Avenue, and Deerfoot Trail. This bungalow offers a perfect balance of comfort, convenience, and functionality in a community with everything you need close at hand. A fantastic opportunity for families, first-time buyers, or investors looking for a well-maintained home in a central location.

Built in 1974

**Essential Information**

MLS® #	A2255861
Price	\$585,000
Bedrooms	4
Bathrooms	2.00
Full Baths	2
Square Footage	1,094
Acres	0.13
Year Built	1974
Type	Residential
Sub-Type	Detached
Style	Bi-Level
Status	Active

**Community Information**

Address	143 Manora Drive Ne
Subdivision	Marlborough Park
City	Calgary

County	Calgary
Province	Alberta
Postal Code	T2A 4P6

### Amenities

Parking Spaces	4
Parking	Additional Parking, Double Garage Detached, Driveway, Garage Faces Front, Oversized
# of Garages	2

### Interior

Interior Features	Ceiling Fan(s), Quartz Counters, See Remarks, Storage, Vinyl Windows
Appliances	Dishwasher, Dryer, Electric Stove, Range Hood, Refrigerator, Washer, Window Coverings
Heating	Forced Air, Natural Gas
Cooling	None
Has Basement	Yes
Basement	Finished, Full

### Exterior

Exterior Features	Fire Pit, Private Yard, Storage
Lot Description	Back Lane, Back Yard, Landscaped, Low Maintenance Landscape, Rectangular Lot
Roof	Asphalt Shingle
Construction	Stucco, Vinyl Siding, Wood Frame
Foundation	Poured Concrete

### Additional Information

Date Listed	September 10th, 2025
Days on Market	1
Zoning	R-CG

### Listing Details

Listing Office	RE/MAX iRealty Innovations
----------------	----------------------------

Data is supplied by Pillar 9â„¢ MLS® System. Pillar 9â„¢ is the owner of the copyright in its MLS® System. Data is deemed reliable but is not guaranteed accurate by Pillar 9â„¢. The trademarks MLS®, Multiple Listing Service® and the associated logos are owned by The Canadian Real Estate Association (CREA) and identify the quality of services provided by real estate professionals who are members of CREA. Used under license.