

# \$13 - 103a, 1501 Dunmore Road Se, Medicine Hat

MLS® #A2255921

## \$13

0 Bedroom, 0.00 Bathroom,  
Commercial on 0.00 Acres

Southview-Park Meadows, Medicine Hat,  
Alberta

This 1,086 sq ft space on Dunmore Road SE offers abundant natural light, off-street and on-street parking. Ideal for various businesses, it combines convenience and visibility in a prime location with easy access to surrounding areas. Perfect for those seeking a bright, accessible workspace. Previously developed for a Doctors office, this space has 3 large rooms, all with sinks and another additional office. Reception area and nice sized waiting room. Two washrooms, one with washer/dryer hook ups. Operating costs are \$6.62/sq ft

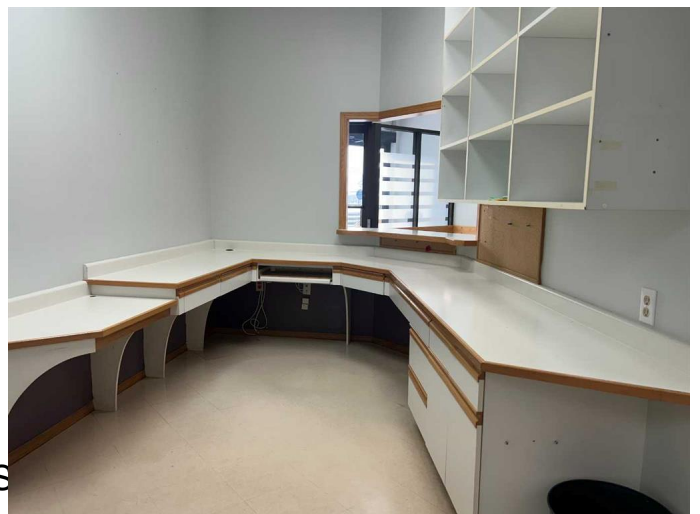
Built in 1980

## Essential Information

MLS® #	A2255921
Price	\$13
Bathrooms	0.00
Acres	0.00
Year Built	1980
Type	Commercial
Sub-Type	Office
Status	Active

## Community Information

Address	103a, 1501 Dunmore Road S
Subdivision	Southview-Park Meadows
City	Medicine Hat
County	Medicine Hat



Province                    Alberta  
Postal Code                T1A 1Z8

### **Additional Information**

Date Listed                September 10th, 2025  
Days on Market          56

### **Listing Details**

Listing Office             RE/MAX MEDALTA REAL ESTATE

Data is supplied by Pillar 9â,,ç MLSÂ® System. Pillar 9â,,ç is the owner of the copyright in its MLSÂ® System. Data is deemed reliable but is not guaranteed accurate by Pillar 9â,,ç. The trademarks MLSÂ®, Multiple Listing ServiceÂ® and the associated logos are owned by The Canadian Real Estate Association (CREA) and identify the quality of services provided by real estate professionals who are members of CREA. Used under license.