

# \$459,900 - 702 Greywolf Run N, Lethbridge

MLS® #A2256225

## \$459,900

4 Bedroom, 3.00 Bathroom, 1,006 sqft

Residential on 0.10 Acres

Blackwolf 1, Lethbridge, Alberta

This 4-bedroom, 3-bathroom home offers over 1,900 sq. ft. of developed living space, with 1,006 sq. ft. on the main level plus 912 sq. ft. in the fully finished basement. Situated on a corner lot, the home has great curb appeal and is directly across from Blackwolf Pond and the walking path.

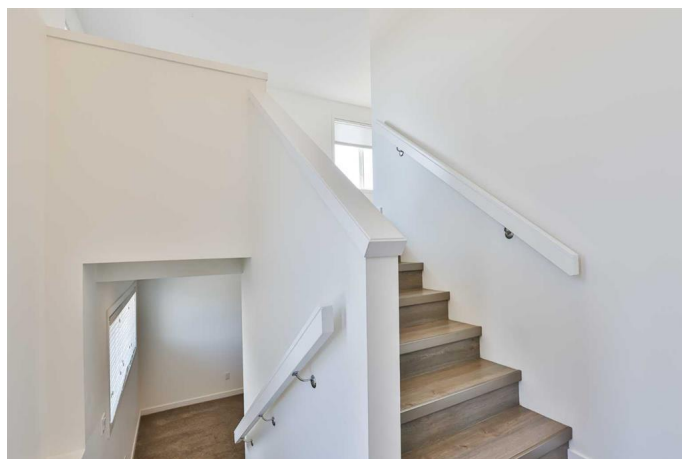
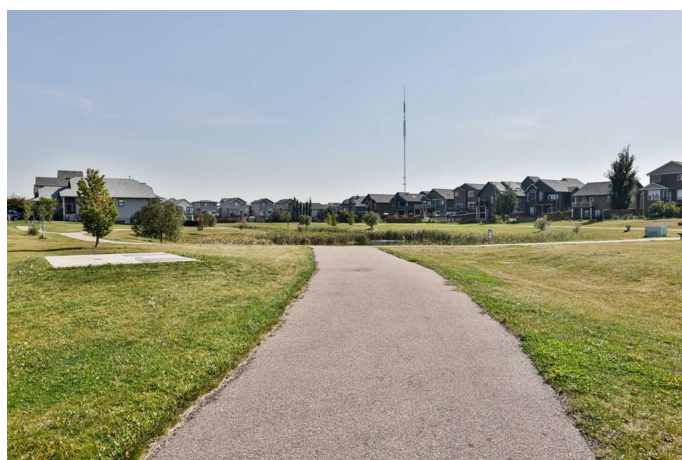
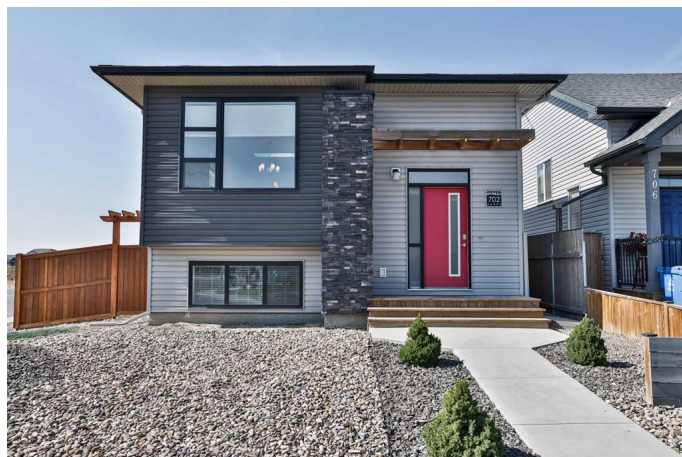
The basement is fully developed, adding extra bedrooms and living space for your family's needs. The property is fully fenced and includes a parking pad, with options for a future garage (confirm with the City of Lethbridge).

Move-in ready, this home comes complete with all kitchen appliances plus washer and dryer. Located close to shopping and super close to the new Legacy Park, it offers both convenience and lifestyle in a sought-after neighborhood.

Built in 2016

## Essential Information

MLS® #	A2256225
Price	\$459,900
Bedrooms	4
Bathrooms	3.00
Full Baths	3
Square Footage	1,006
Acres	0.10



Year Built	2016
Type	Residential
Sub-Type	Detached
Style	Bi-Level
Status	Active

### **Community Information**

Address	702 Greywolf Run N
Subdivision	Blackwolf 1
City	Lethbridge
County	Lethbridge
Province	Alberta
Postal Code	T1H 7E9

### **Amenities**

Parking Spaces	2
Parking	Parking Pad

### **Interior**

Interior Features	Kitchen Island, No Smoking Home, Open Floorplan, Sump Pump(s)
Appliances	Central Air Conditioner, Microwave Hood Fan, Refrigerator, Stove(s), Washer/Dryer
Heating	Forced Air
Cooling	Central Air
Has Basement	Yes
Basement	Finished, Full

### **Exterior**

Exterior Features	None
Lot Description	Back Lane, Back Yard, Corner Lot, Landscaped, Low Maintenance Landscape
Roof	Asphalt Shingle
Construction	Vinyl Siding, Wood Frame
Foundation	Poured Concrete

### **Additional Information**

Date Listed	September 11th, 2025
Zoning	R-M

### **Listing Details**

Listing Office

RE/MAX REAL ESTATE - LETHBRIDGE

Data is supplied by Pillar 9â„¢ MLSÂ® System. Pillar 9â„¢ is the owner of the copyright in its MLSÂ® System. Data is deemed reliable but is not guaranteed accurate by Pillar 9â„¢. The trademarks MLSÂ®, Multiple Listing ServiceÂ® and the associated logos are owned by The Canadian Real Estate Association (CREA) and identify the quality of services provided by real estate professionals who are members of CREA. Used under license.