

\$350,000 - 1210 6 Avenue S, Lethbridge

MLS® #A2256298

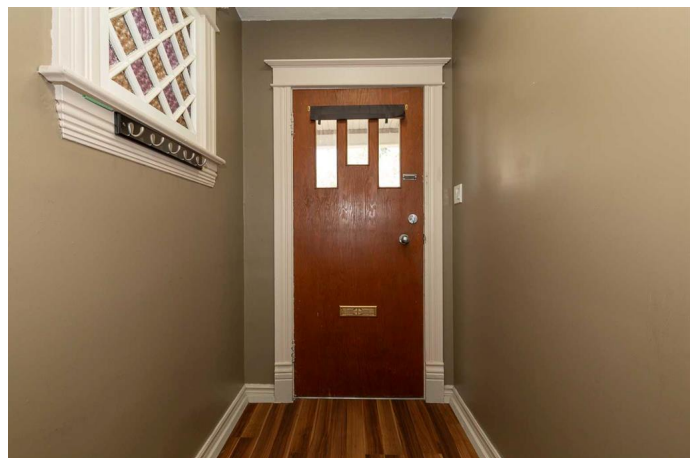
\$350,000

4 Bedroom, 1.00 Bathroom, 1,567 sqft

Residential on 0.12 Acres

London Road, Lethbridge, Alberta

Feel the pulse of this city in this timeless 1.5 storey character home, perfectly set in the heart of Lethbridge's iconic London Road neighbourhood. Built in 1908, this 1,567 sqft residence captures the romance of a bygone era while offering the comfort and peace of mind of modern upgrades. The moment you arrive, the home's exterior presence pulls you in. Inside, 10' ceilings, original 10" baseboards, and stunning original stained glass windows frame sunlit rooms that feel both grand and inviting. The front living room, anchored by a warm pellet stove, is the perfect place to curl up on a quiet evening. Through the large dining room and into the kitchen, timeless cabinetry with subtle modern detailing's brings a fresh, stylish touch that complements the home's heritage charm. A versatile main floor bedroom makes an ideal office or creative space, while the renovated four-piece bathroom and convenient laundry room blend seamlessly into the home's historic charm. Upstairs, three bright bedrooms with gently sloped ceilings evoke the storybook romance that only character homes can. Each space filled with natural light and personality. This house has seen many thoughtful updates including modernized electrical and plumbing, updated flooring and paint, a new hot water tank (2025), and a new roof (2017) give this historic home the peace of mind every homeowner deserves. In the backyard, unwind on the spacious deck surrounded by a lovingly kept yard—your own private retreat in the



heart of the city. Off-street parking, a 14x20 detached garage, and an attached shed add function to the beauty. Step into a piece of Lethbridge historyâ€”reach out to your REALTORÂ® today to experience it in person.

Built in 1908

Essential Information

MLS® #	A2256298
Price	\$350,000
Bedrooms	4
Bathrooms	1.00
Full Baths	1
Square Footage	1,567
Acres	0.12
Year Built	1908
Type	Residential
Sub-Type	Detached
Style	2 Storey
Status	Active

Community Information

Address	1210 6 Avenue S
Subdivision	London Road
City	Lethbridge
County	Lethbridge
Province	Alberta
Postal Code	T1J 1A4

Amenities

Parking Spaces	1
Parking	Single Garage Detached
# of Garages	1

Interior

Interior Features	Ceiling Fan(s), Storage
Appliances	See Remarks
Heating	Forced Air

Cooling	None
Fireplace	Yes
# of Fireplaces	1
Fireplaces	Electric
Basement	None

Exterior

Exterior Features	None
Lot Description	Back Yard, Landscaped, Standard Shaped Lot
Roof	Asphalt Shingle
Construction	Vinyl Siding
Foundation	Poured Concrete

Additional Information

Date Listed	September 11th, 2025
Days on Market	1
Zoning	R-L(L)

Listing Details

Listing Office	Lethbridge Real Estate.com
----------------	----------------------------

Data is supplied by Pillar 9â„¢ MLS® System. Pillar 9â„¢ is the owner of the copyright in its MLS® System. Data is deemed reliable but is not guaranteed accurate by Pillar 9â„¢. The trademarks MLS®, Multiple Listing Service® and the associated logos are owned by The Canadian Real Estate Association (CREA) and identify the quality of services provided by real estate professionals who are members of CREA. Used under license.