

# \$1,298,000 - 27, 137 Wapiti Close, Canmore

MLS® #A2257146

**\$1,298,000**

3 Bedroom, 4.00 Bathroom, 1,501 sqft  
Residential on 0.03 Acres

Eagle Terrace, Canmore, Alberta

Stunning 3-Bedroom Townhouse with Sweeping Mountain Views – Welcome to Canmore Living at Its Finest!

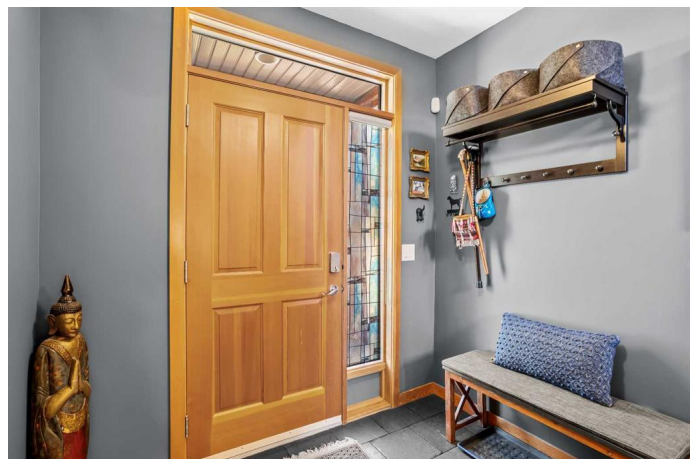
Nestled in the heart of Canmore, this incredible 3-bedroom, 3.5-bath townhouse offers 1,999 Sq ft of living with the perfect blend of luxury, comfort, and unbeatable mountain views. With panoramic vistas of the iconic Three Sisters, and sun-drenched southern exposure, this home invites you to live where nature meets elegance.

Step inside and discover refinished maple hardwood floors adding warmth and charm. The open-concept main floor is highlighted by a gourmet kitchen with granite island countertops, newer high-end appliances, and a cozy rock fireplace – perfect for mountain evenings.

Upstairs, two generously sized bedrooms each feature large walk-in closets, with a one of the three decks in the unit right off the master bedroom, as well access to full bathrooms, making it ideal for both families and guests. The main-level powder room adds convenience and style just off the kitchen and living space.

The lower level is a true flex space – whether you need a home office, guest suite, or a third bedroom, this area is designed to adapt to your lifestyle. Complete with a 4-piece bathroom, Murphy bed, walk out patio, in-floor heating, and access to the garage, it's both practical and inviting.

This is more than just a home – it's your



gateway to the Canmore lifestyle. Whether you're enjoying morning coffee with mountain views or coming home after a day on the trails, this townhouse offers the perfect base for it all. Donâ€™t miss your chance to own this incredible piece of Canmore!

Built in 2003

### Essential Information

MLS® #	A2257146
Price	\$1,298,000
Bedrooms	3
Bathrooms	4.00
Full Baths	3
Half Baths	1
Square Footage	1,501
Acres	0.03
Year Built	2003
Type	Residential
Sub-Type	Row/Townhouse
Style	3 Storey
Status	Active

### Community Information

Address	27, 137 Wapiti Close
Subdivision	Eagle Terrace
City	Canmore
County	Bighorn No. 8, M.D. of
Province	Alberta
Postal Code	T1W3B2

### Amenities

Amenities	Other, Park, Playground, Snow Removal, Trash
Parking Spaces	2
Parking	Concrete Driveway, Garage Faces Front, Off Street, Single Garage Attached
# of Garages	1

### Interior

Interior Features	Breakfast Bar, Ceiling Fan(s), Central Vacuum, High Ceilings, Kitchen Island, No Smoking Home, Pantry, Storage
Appliances	Dishwasher, Electric Oven, Garage Control(s), Garburator, Induction Cooktop, Microwave Hood Fan, Refrigerator, Washer/Dryer
Heating	In Floor, Forced Air
Cooling	None
Fireplace	Yes
# of Fireplaces	1
Fireplaces	Family Room, Gas
Has Basement	Yes
Basement	Finished, Full, Walk-Out

## Exterior

Exterior Features	BBQ gas line, Fire Pit
Lot Description	Cul-De-Sac, Landscaped, Low Maintenance Landscape, See Remarks
Roof	Asphalt Shingle
Construction	Concrete, Stucco, Wood Siding, Log
Foundation	Poured Concrete

## Additional Information

Date Listed	September 18th, 2025
Zoning	Res Multi

## Listing Details

Listing Office	Grassroots Realty Group
----------------	-------------------------

Data is supplied by Pillar 9â„¢ MLSÂ® System. Pillar 9â„¢ is the owner of the copyright in its MLSÂ® System. Data is deemed reliable but is not guaranteed accurate by Pillar 9â„¢. The trademarks MLSÂ®, Multiple Listing ServiceÂ® and the associated logos are owned by The Canadian Real Estate Association (CREA) and identify the quality of services provided by real estate professionals who are members of CREA. Used under license.