

\$639,900 - 605 Couleecreek Place S, Lethbridge

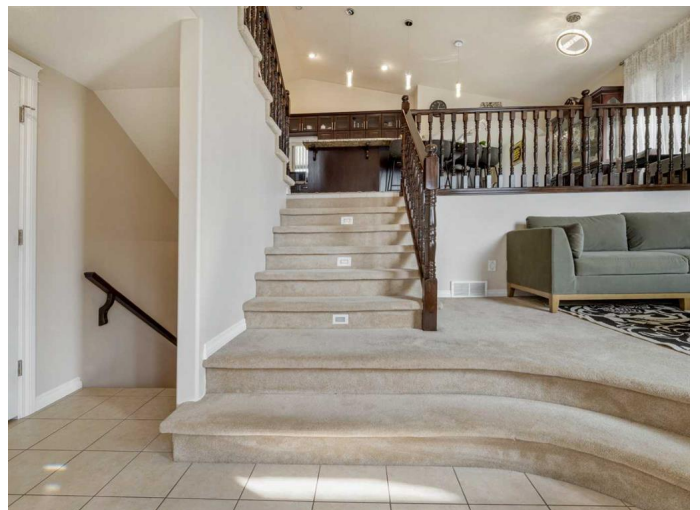
MLS® #A2258003

\$639,900

5 Bedroom, 3.00 Bathroom, 1,711 sqft
Residential on 0.12 Acres

Southgate, Lethbridge, Alberta

Custom built 5-level split home in South Lethbridge tucked away on a cul-de-sac that has access to walking path leading to Coulee Creek park & pond. Location is close to all big box shopping and amenities, including Superstore, Costco, Home Depot, Walmart, Best Buy, etc...Exterior stucco finish. Step inside the large welcoming entry. Vaulted ceilings give you a nice open view of the main and 4th level. A couple steps up to the living room that features a gas fireplace and large windows for natural light. A few more steps up to the main level features a HUGE kitchen with tile floors, granite counters with raised breakfast bar, stainless steel appliances, large pantry, and a window looking out to the covered deck. Around the corner is a large dining room that can accommodate all the family. Garden door to the covered deck out back that is east facing and out of the wind! This level also houses 2 bedrooms, a 4 piece bathroom with tub/shower combo, and a laundry room. The 5th level above the garage includes the primary bedroom suite with large walk-in closet and newly renovated ensuite(\$32k in 2025) that features walk in tiled shower with glass doors. The lower level(or 2nd level) has a HUGE family room with gas fireplace, a MASSIVE bedroom with walk-in closet that would be perfect for a couple kids to share(or for the in-laws), and a 4 piece bath with tub/shower combo.. Down another level to the basement you'll find another good size bedroom and access to the



utility room. Home has conveniences of tankless hot water, central vac, & central air. Heated 23x28 double garage for your vehicles. Yard is fenced with turf and rock landscaping for low maintenance. Move in and enjoy!

Built in 2011

Essential Information

MLS® #	A2258003
Price	\$639,900
Bedrooms	5
Bathrooms	3.00
Full Baths	3
Square Footage	1,711
Acres	0.12
Year Built	2011
Type	Residential
Sub-Type	Detached
Style	5 Level Split
Status	Active

Community Information

Address	605 Couleecreek Place S
Subdivision	Southgate
City	Lethbridge
County	Lethbridge
Province	Alberta
Postal Code	T1K 8C1

Amenities

Parking Spaces	5
Parking	Concrete Driveway, Double Garage Attached, Heated Garage, Insulated
# of Garages	2

Interior

Interior Features	Breakfast Bar, Chandelier, Granite Counters, Kitchen Island, No Animal Home, No Smoking Home, Open Floorplan, Sump Pump(s), Tankless Hot Water, Vaulted Ceiling(s), Vinyl Windows, Walk-In Closet(s)
-------------------	--

Appliances	Central Air Conditioner, Dishwasher, Dryer, Garage Control(s), Gas Stove, Microwave, Refrigerator, Washer, Window Coverings, Tankless Water Heater
Heating	Forced Air, Natural Gas
Cooling	Central Air
Fireplace	Yes
# of Fireplaces	2
Fireplaces	Family Room, Gas, Living Room
Has Basement	Yes
Basement	Finished, Full

Exterior

Exterior Features	Private Yard
Lot Description	Back Yard, Low Maintenance Landscape, Standard Shaped Lot
Roof	Asphalt Shingle
Construction	Stucco
Foundation	Poured Concrete

Additional Information

Date Listed	September 18th, 2025
Days on Market	1
Zoning	R-L

Listing Details

Listing Office	REAL BROKER
----------------	-------------

Data is supplied by Pillar 9â„¢ MLSÂ® System. Pillar 9â„¢ is the owner of the copyright in its MLSÂ® System. Data is deemed reliable but is not guaranteed accurate by Pillar 9â„¢. The trademarks MLSÂ®, Multiple Listing ServiceÂ® and the associated logos are owned by The Canadian Real Estate Association (CREA) and identify the quality of services provided by real estate professionals who are members of CREA. Used under license.