

# \$439,900 - 66 Hallgren Drive, Sylvan Lake

MLS® #A2258340

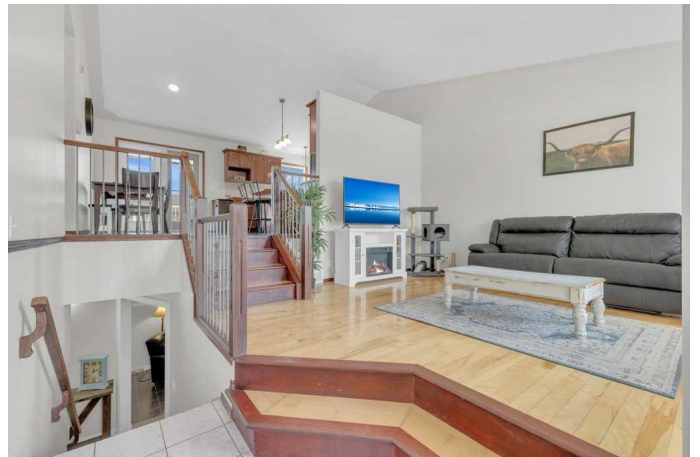
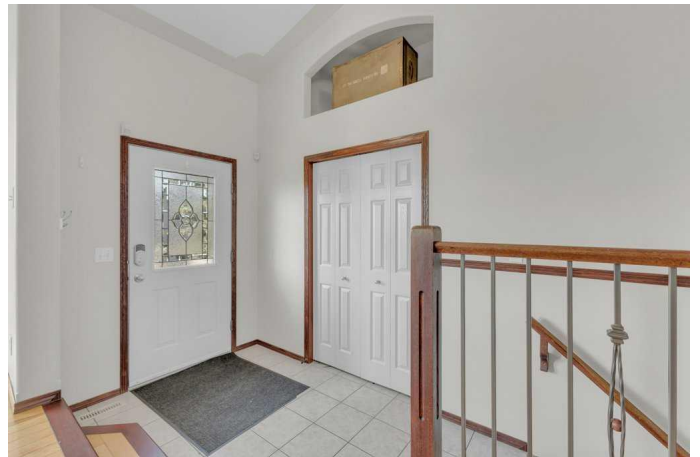
**\$439,900**

4 Bedroom, 3.00 Bathroom, 1,212 sqft

Residential on 0.13 Acres

Hewlett Park, Sylvan Lake, Alberta

STEP INTO LAKE LIFE with this bright and spacious 1200+sqft BI LEVEL! Featuring 3 BEDROOMS UP - including a primary with its own 4-piece ENSUITE - plus another full bathroom, this home offers the perfect layout for family living. The VAULT CEILINGS create a welcoming OPEN-CONCEPT feel as the entry flows into the living room, then up a few steps to the dining area and kitchen. The kitchen boasts a CORNER PANTRY, SMALL ISLAND, and patio doors that lead to a massive 2-TIERD DECK - ideal for summer BBQs and entertaining. The lower level is all about lifestyle: cozy up for movie nights, set up a GAMES ROOM or homeschool space, and enjoy the OVER SIZED BEDROOM that makes the perfect teen retreat or guest room, complete with its own 3-PIECE BATHROOM. You'll also appreciate the 16x13 STORAGE ROOM for all your extras. Out back, the FENCED YARD is ready for evenings around your fire pit under the stars. The HEATED DOUBLE DETACHED GARAGE with 220v plus ADDITIONAL PARKING adds year-round convenience. And the location? Step right out your back gate to a PLAYGROUND - great fun for the kiddos or grandchildren, trail that takes you straight to the beach and Lakeshore Drive. Schools, shopping, and amenities are all just minutes away. Updates you'll love: NEW SHINGLES(2023), FRESH PAINT throughout (2025), RENOVATED BATHROOMS (2022), and a NEW WATER SOFTNER(2022). This home is move-in ready and packed with



lifestyle - whether it's family fun, entertaining,  
or enjoying the outdoors right at your doorstep!

Built in 2000

### **Essential Information**

MLS® #	A2258340
Price	\$439,900
Bedrooms	4
Bathrooms	3.00
Full Baths	3
Square Footage	1,212
Acres	0.13
Year Built	2000
Type	Residential
Sub-Type	Detached
Style	Bi-Level
Status	Active

### **Community Information**

Address	66 Hallgren Drive
Subdivision	Hewlett Park
City	Sylvan Lake
County	Red Deer County
Province	Alberta
Postal Code	T4S 2G8

### **Amenities**

Parking Spaces	2
Parking	220 Volt Wiring, Additional Parking, Alley Access, Double Garage Detached, Garage Door Opener, Heated Garage, Off Street, Parking Pad
# of Garages	4

### **Interior**

Interior Features	Ceiling Fan(s)
Appliances	Dishwasher, Garage Control(s), Gas Stove, Microwave Hood Fan, Refrigerator, Washer/Dryer, Water Softener, Window Coverings
Heating	Forced Air

Cooling	None
Has Basement	Yes
Basement	Finished, Full

## Exterior

Exterior Features	Private Yard
Lot Description	Back Lane, Back Yard, Backs on to Park/Green Space, Environmental Reserve, Front Yard, Landscaped
Roof	Asphalt Shingle
Construction	Vinyl Siding, Wood Frame
Foundation	Poured Concrete

## Additional Information

Date Listed	September 18th, 2025
Zoning	R1

## Listing Details

Listing Office	CIR Realty
----------------	------------

Data is supplied by Pillar 9â„¢ MLS® System. Pillar 9â„¢ is the owner of the copyright in its MLS® System. Data is deemed reliable but is not guaranteed accurate by Pillar 9â„¢. The trademarks MLS®, Multiple Listing Service® and the associated logos are owned by The Canadian Real Estate Association (CREA) and identify the quality of services provided by real estate professionals who are members of CREA. Used under license.