

\$974,000 - 33016 Township Road 424a, Rural Ponoka County

MLS® #A2258531

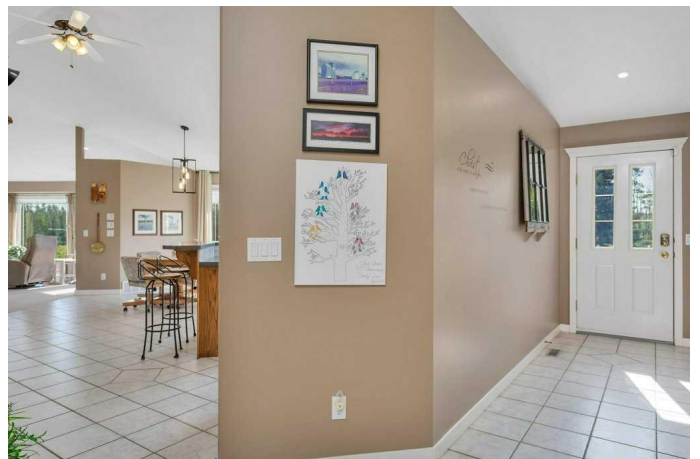
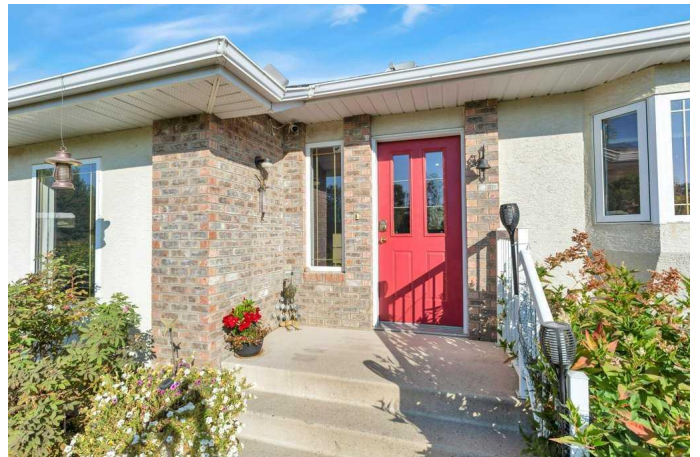
\$974,000

4 Bedroom, 3.00 Bathroom, 1,945 sqft
Residential on 8.62 Acres

NONE, Rural Ponoka County, Alberta

This stunning 8.62-acre property offers the best of both worldsâ€”peaceful country living with the convenience of being only 5 minutes west of Rimbey. The 1,945 sq. ft. bungalow is designed with both comfort and practicality in mind, featuring an open and bright main floor accented by elegant built-ins, new custom window shades, and a cozy gas fireplace. The kitchen, with an abundance of counter tops, gas stove, and large walk-in pantry, which seamlessly flows into the dining area, making it ideal for family gatherings or entertaining. The main level offers two spacious bedrooms, two bathrooms, and thoughtful extras like a large laundry and mudroom. The fully developed basement adds two more bedrooms, a bathroom, a generous rec room, and ample storage options including a cold room and utility space. Heated by an efficient boiler system providing both in-floor and forced-air comfort, this home ensures warmth without the need for a traditional furnace.

Outdoors, the property continues to impress. An oversized heated double garage (32â€™ x 31â€™) and a massive 32â€™ x 48â€™ heated shop with radiant heating provide incredible space for projects, hobbies, or equipment. For added convenience, a 22â€™ x 40â€™ tarp RV cover building offers excellent storage for your recreational vehicles. The backyard is private which



includes an inviting pond with a trickling water fall –perfect for relaxation or outdoor living. Practical updates include a drilled well, a septic tank and new septic mound (2024), and a durable stucco exterior. With its perfect blend of modern comfort, functionality, and country charm, this acreage is a rare find.If you’re looking for a private retreat that’s close to town but offers all the benefits of country living, this property is one you don’t want to miss.

Built in 1999

Essential Information

MLS® #	A2258531
Price	\$974,000
Bedrooms	4
Bathrooms	3.00
Full Baths	3
Square Footage	1,945
Acres	8.62
Year Built	1999
Type	Residential
Sub-Type	Detached
Style	Acreage with Residence, Bungalow
Status	Active

Community Information

Address	33016 Township Road 424a
Subdivision	NONE
City	Rural Ponoka County
County	Ponoka County
Province	Alberta
Postal Code	T0C 2J0

Amenities

Parking	Double Garage Attached
# of Garages	2

Interior

Interior Features	Ceiling Fan(s), Double Vanity
Appliances	Dishwasher, Dryer, Gas Stove, Microwave, Refrigerator, Washer, Window Coverings
Heating	Central, Forced Air, Natural Gas
Cooling	None
Fireplace	Yes
# of Fireplaces	1
Fireplaces	Gas, Living Room, Mantle
Has Basement	Yes
Basement	Finished, Full

Exterior

Exterior Features	Garden, Private Yard
Lot Description	Back Yard, Front Yard, Fruit Trees/Shrub(s), Garden, Gazebo, Landscaped, No Neighbours Behind, Waterfall
Roof	Asphalt Shingle
Construction	Stucco, Wood Frame
Foundation	Poured Concrete

Additional Information

Date Listed	September 19th, 2025
Zoning	3

Listing Details

Listing Office	CIR Realty
----------------	------------

Data is supplied by Pillar 9â„¢ MLS® System. Pillar 9â„¢ is the owner of the copyright in its MLS® System. Data is deemed reliable but is not guaranteed accurate by Pillar 9â„¢. The trademarks MLS®, Multiple Listing Service® and the associated logos are owned by The Canadian Real Estate Association (CREA) and identify the quality of services provided by real estate professionals who are members of CREA. Used under license.