

\$1,475,000 - 1420 11 Avenue Sw, Calgary

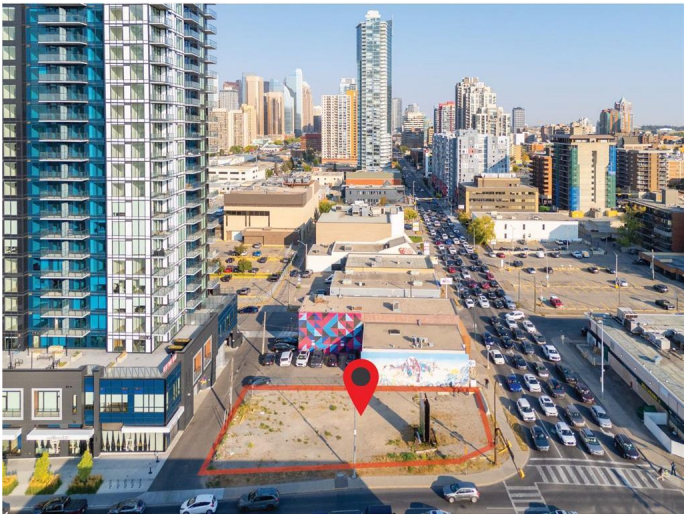
MLS® #A2260729

\$1,475,000

0 Bedroom, 0.00 Bathroom,
Land on 0.19 Acres

Beltline, Calgary, Alberta

Situated on the prominent corner of 11th Avenue and 14th Street SW, this exceptional parcel of land presents a rare opportunity in one of Calgary’s most dynamic and rapidly evolving urban districts. Spanning 755 square metres, the site is ideally positioned to take advantage of both high visibility and excellent accessibility. Zoned CC-X (Centre City Mixed Use District), the property offers unmatched flexibility for future development, accommodating a wide range of commercial, residential, or mixed-use projects. This zoning allows for creative, high-density designs that can capitalize on the vibrancy of the Beltline and downtown core. Whether you envision a flagship commercial development, a residential project, or a dynamic mixed-use concept, this lot offers the size, zoning, and location to bring your vision to life.



Essential Information

MLS® #	A2260729
Price	\$1,475,000
Bathrooms	0.00
Acres	0.19
Type	Land
Sub-Type	Commercial Land
Status	Active

Community Information

Address 1420 11 Avenue Sw

Subdivision	Beltline
City	Calgary
County	Calgary
Province	Alberta
Postal Code	T3C 0M8

Additional Information

Date Listed	October 3rd, 2025
Days on Market	1
Zoning	CC-X

Listing Details

Listing Office	RE/MAX Landan Real Estate
----------------	---------------------------

Data is supplied by Pillar 9â„¢ MLS® System. Pillar 9â„¢ is the owner of the copyright in its MLS® System. Data is deemed reliable but is not guaranteed accurate by Pillar 9â„¢. The trademarks MLS®, Multiple Listing Service® and the associated logos are owned by The Canadian Real Estate Association (CREA) and identify the quality of services provided by real estate professionals who are members of CREA. Used under license.