

# \$975,000 - 439 Parkridge Crescent Se, Calgary

MLS® #A2262177

## \$975,000

5 Bedroom, 3.00 Bathroom, 1,338 sqft

Residential on 0.15 Acres

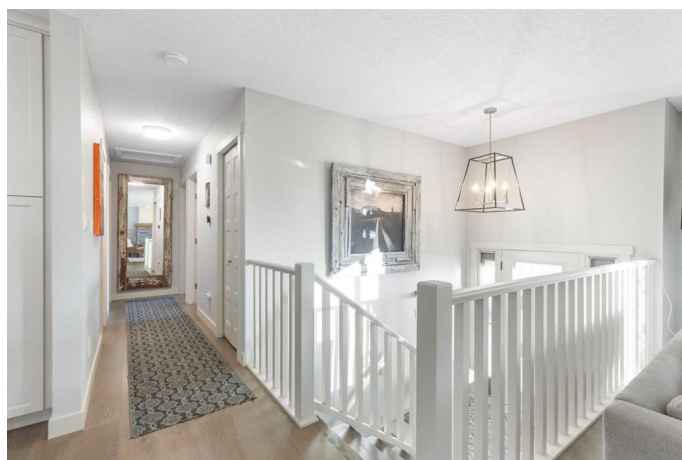
Parkland, Calgary, Alberta

Don't miss this opportunity to live in one of Calgary's best communities, Parkland. Come see this immaculate 5 bedroom 3 bathroom bi-level home on a very quiet street with a great view. Top of the line finishes and custom built-ins throughout. Entertainers dream - fully developed yard, and brand new covered deck/ pergola. Basement has a bar for game and movie nights and a separate entrance accessing the back. Oversized double garage. Enjoy central air in the summer and two fireplaces in the winter. Walk to Fish Creek Park and enjoy the fresh air, mature trees, and beautiful colours. Check out the Parkland Community website for events calendar and community information. Parkland has no through roads like some of the other Fish Creek communities so it is VERY quiet and low traffic. Come see for yourself!

Built in 1975

## Essential Information

MLS® #	A2262177
Price	\$975,000
Bedrooms	5
Bathrooms	3.00
Full Baths	3
Square Footage	1,338
Acres	0.15
Year Built	1975



Type	Residential
Sub-Type	Detached
Style	Bi-Level
Status	Active

### Community Information

Address	439 Parkridge Crescent Se
Subdivision	Parkland
City	Calgary
County	Calgary
Province	Alberta
Postal Code	T2J 4Z8

### Amenities

Amenities	Park, Playground, Party Room
Parking Spaces	2
Parking	Alley Access, Double Garage Detached, Garage Door Opener, Paved, Garage Faces Rear
# of Garages	2

### Interior

Interior Features	Bar, Built-in Features, Ceiling Fan(s), Closet Organizers, Granite Counters, Kitchen Island, No Smoking Home, Open Floorplan, Pantry, Separate Entrance
Appliances	Dishwasher, Gas Stove, Microwave, Refrigerator, Washer/Dryer, Water Softener, Window Coverings, Bar Fridge
Heating	Forced Air, Natural Gas
Cooling	Central Air
Fireplace	Yes
# of Fireplaces	2
Fireplaces	Basement, Family Room, Gas, Insert, Mantle, Stone
Has Basement	Yes
Basement	Finished, Full, Exterior Entry, Walk-Up To Grade

### Exterior

Exterior Features	BBQ gas line, Private Yard
Lot Description	Back Lane, Back Yard, Front Yard, Landscaped, Treed
Roof	Asphalt Shingle
Construction	Mixed

Foundation                      Poured Concrete

**Additional Information**

Date Listed                      October 10th, 2025  
Zoning                              R-CG  
HOA Fees                         200  
HOA Fees Freq.                ANN

**Listing Details**

Listing Office                    Optimum Realty Group

Data is supplied by Pillar 9â„¢ MLS® System. Pillar 9â„¢ is the owner of the copyright in its MLS® System. Data is deemed reliable but is not guaranteed accurate by Pillar 9â„¢. The trademarks MLS®, Multiple Listing Service® and the associated logos are owned by The Canadian Real Estate Association (CREA) and identify the quality of services provided by real estate professionals who are members of CREA. Used under license.