

# \$215,000 - 418, 1648 Saamis Drive Nw, Medicine Hat

MLS® #A2262260

## \$215,000

2 Bedroom, 2.00 Bathroom, 839 sqft

Residential on 0.00 Acres

Northwest Crescent Heights, Medicine Hat,  
Alberta

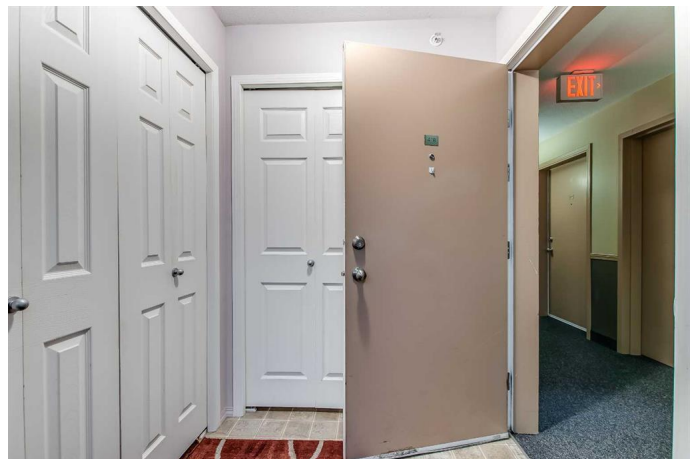
Move-in ready, this clean and well-maintained unit offers an open concept design with laminate flooring, oak kitchen, dining space, and a spacious living room leading to a covered deck with gas BBQ hookup. The primary suite includes a walk-in closet & 4-piece ensuite, plus there's a second bedroom, full bath, and in-suite laundry. Underground parking, storage, and condo fees that cover all utilities (except phone & cable) make this an easy choice. Professionally managed for peace of mind!

Built in 2005

## Essential Information

MLS® #	A2262260
Price	\$215,000
Bedrooms	2
Bathrooms	2.00
Full Baths	2
Square Footage	839
Acres	0.00
Year Built	2005
Type	Residential
Sub-Type	Apartment
Style	Single Level Unit
Status	Active

## Community Information



Address	418, 1648 Saamis Drive Nw
Subdivision	Northwest Crescent Heights
City	Medicine Hat
County	Medicine Hat
Province	Alberta
Postal Code	T1C4X1

### **Amenities**

Amenities	Elevator(s), Parking, Visitor Parking
Parking Spaces	1
Parking	Stall, Titled, Underground

### **Interior**

Interior Features	Ceiling Fan(s), Elevator
Appliances	Central Air Conditioner, Dishwasher, Garage Control(s), Microwave, Range Hood, Refrigerator, Stove(s), Washer/Dryer, Window Coverings
Heating	Boiler
Cooling	Central Air
# of Stories	4

### **Exterior**

Exterior Features	Balcony, BBQ gas line
Roof	Asphalt Shingle
Construction	Vinyl Siding

### **Additional Information**

Date Listed	October 4th, 2025
Days on Market	2
Zoning	R-MD

### **Listing Details**

Listing Office	RIVER STREET REAL ESTATE
----------------	--------------------------

Data is supplied by Pillar 9â„¢ MLS® System. Pillar 9â„¢ is the owner of the copyright in its MLS® System. Data is deemed reliable but is not guaranteed accurate by Pillar 9â„¢. The trademarks MLS®, Multiple Listing Service® and the associated logos are owned by The Canadian Real Estate Association (CREA) and identify the quality of services provided by real estate professionals who are members of CREA. Used under license.