

\$659,900 - 11306 107 Avenue, Grande Prairie

MLS® #A2262409

\$659,900

5 Bedroom, 4.00 Bathroom, 1,399 sqft
Residential on 0.13 Acres

Westgate., Grande Prairie, Alberta

Clover Construction job # C141. Open plan bilevel with legal suite - 3 beds / 2 baths upper suite; 2 beds / 2 baths lower suite. 3 car attached garage - 2 stalls upper suite; 1 stall lower suite. Deck. Vinyl plank flooring throughout. Quartz countertops. Large pie shaped lot. Room for RV pad.

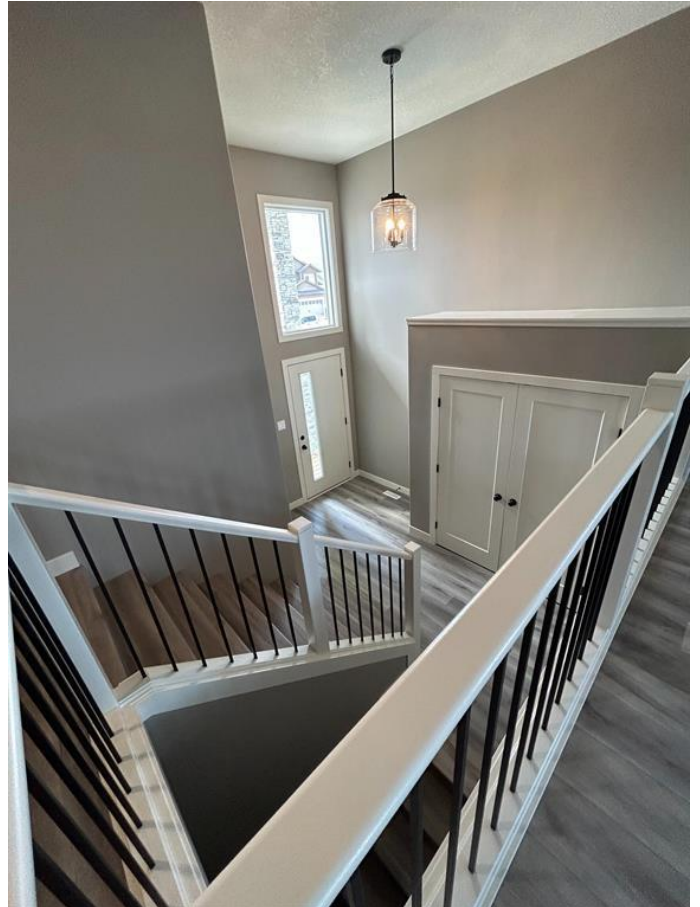
Built in 2023

Essential Information

MLS® #	A2262409
Price	\$659,900
Bedrooms	5
Bathrooms	4.00
Full Baths	4
Square Footage	1,399
Acres	0.13
Year Built	2023
Type	Residential
Sub-Type	Duplex
Style	Bi-Level, Up/Down
Status	Active

Community Information

Address	11306 107 Avenue
Subdivision	Westgate.
City	Grande Prairie
County	Grande Prairie
Province	Alberta



Postal Code T8V6A7

Amenities

Parking Spaces 6
Parking Double Garage Attached, Single Garage Attached
of Garages 3

Interior

Interior Features Kitchen Island, Open Floorplan, Quartz Counters
Appliances Garage Control(s), Microwave Hood Fan
Heating Forced Air
Cooling None
Has Basement Yes
Basement Full, Suite

Exterior

Exterior Features Private Entrance, Private Yard
Lot Description Back Yard, Backs on to Park/Green Space, Front Yard, No Neighbours Behind, Rectangular Lot, Street Lighting, City Lot, Interior Lot
Roof Asphalt Shingle
Construction Concrete, Vinyl Siding, Wood Frame
Foundation Poured Concrete

Additional Information

Date Listed October 5th, 2025
Days on Market 3
Zoning RS

Listing Details

Listing Office Century 21 Grande Prairie Realty Inc.

Data is supplied by Pillar 9â„¢ MLS® System. Pillar 9â„¢ is the owner of the copyright in its MLS® System. Data is deemed reliable but is not guaranteed accurate by Pillar 9â„¢. The trademarks MLS®, Multiple Listing Service® and the associated logos are owned by The Canadian Real Estate Association (CREA) and identify the quality of services provided by real estate professionals who are members of CREA. Used under license.