

\$319,900 - 403, 165 South Ridge Drive Se, Medicine Hat

MLS® #A2263676

\$319,900

3 Bedroom, 3.00 Bathroom, 1,480 sqft

Residential on 0.00 Acres

SE Southridge, Medicine Hat, Alberta

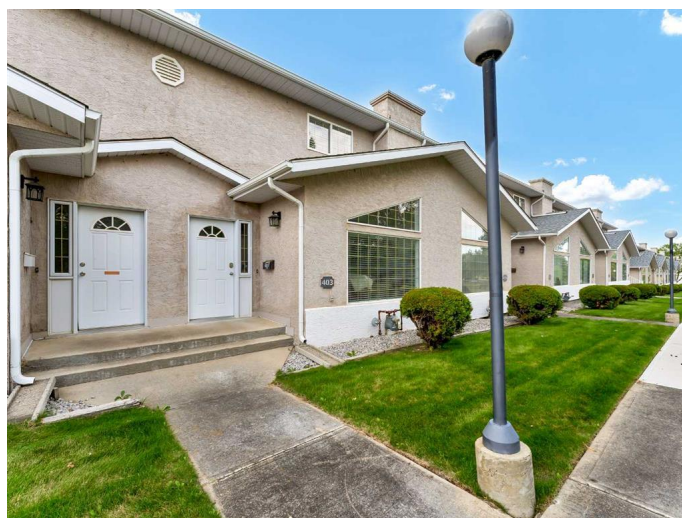
This beautiful Southridge home is a fantastic find in today's low-inventory market. With plenty of space, modern updates, and an affordable price, it's perfect for families, first-time buyers, or anyone looking for an easy move-in experience. This home truly has it all – beds, couches, kitchen essentials, and even garage items – just bring your personal belongings and settle right in. The bright open kitchen is the heart of the home, featuring granite countertops, a pantry, large island, and stainless steel appliances. Enjoy a peaceful park view from your living room while staying cozy by the fireplace. Upstairs you'll find spacious bedrooms, a Jack-and-Jill ensuite with a tiled shower and skylight, plus a great primary suite with walk-in closet. The fully finished lower level offers a family room, two flexible bedroom/den spaces, and a full bath – ideal for guests, work, or play. Outside, enjoy a finished, insulated garage with direct entry, extra parking, and a low-maintenance deck and patio. Homes like this don't come up often in Southridge – especially at this price! Contact your favorite REALTOR® today to book a viewing.

Built in 1995

Essential Information

MLS® # A2263676

Price \$319,900



Bedrooms	3
Bathrooms	3.00
Full Baths	2
Half Baths	1
Square Footage	1,480
Acres	0.00
Year Built	1995
Type	Residential
Sub-Type	Row/Townhouse
Style	2 Storey
Status	Active

Community Information

Address	403, 165 South Ridge Drive Se
Subdivision	SE Southridge
City	Medicine Hat
County	Medicine Hat
Province	Alberta
Postal Code	T1B 4H6

Amenities

Amenities	Parking, Snow Removal, Visitor Parking
Parking Spaces	2
Parking	Single Garage Attached
# of Garages	1

Interior

Interior Features	Closet Organizers, Granite Counters, No Smoking Home, Vinyl Windows
Appliances	Central Air Conditioner, Dishwasher, Garage Control(s), Microwave Hood Fan, Refrigerator, Stove(s), Washer/Dryer, Window Coverings
Heating	Forced Air
Cooling	Central Air
Fireplace	Yes
# of Fireplaces	1
Fireplaces	Gas, Living Room, Mantle
Has Basement	Yes
Basement	Finished, Full

Exterior

Exterior Features	Other, Private Entrance
Lot Description	Backs on to Park/Green Space
Roof	Asphalt Shingle
Construction	Mixed
Foundation	Poured Concrete

Additional Information

Date Listed	October 9th, 2025
Days on Market	1
Zoning	R-MD

Listing Details

Listing Office	RE/MAX MEDALTA REAL ESTATE
----------------	----------------------------

Data is supplied by Pillar 9â„¢ MLS® System. Pillar 9â„¢ is the owner of the copyright in its MLS® System. Data is deemed reliable but is not guaranteed accurate by Pillar 9â„¢. The trademarks MLS®, Multiple Listing Service® and the associated logos are owned by The Canadian Real Estate Association (CREA) and identify the quality of services provided by real estate professionals who are members of CREA. Used under license.