

\$439,865 - 112 Gray Close, Sylvan Lake

MLS® #A2264358

\$439,865

3 Bedroom, 2.00 Bathroom, 1,138 sqft

Residential on 0.07 Acres

Greyhawk, Sylvan Lake, Alberta

Absolutely Gorgeous 3 Bedroom 2 Full Bath Bungalow half Duplex with Front attached garage! This home is built to the highest standards with Limited Lifetime Architectural Shingles, Low E Argon Sun stop Windows, Garage With dry Sump, Gas Line to Deck, 9' Ceilings on the main floor, Upgraded Flooring, woodwork and lighting, 5' Shower in ensuite, High Efficiency HWT and Furnace, R60 Insulation, if quality is what you are after, this is it!!! 2 Year Builder Warranty and 10 Year Alberta New Home Warranty are included!!!

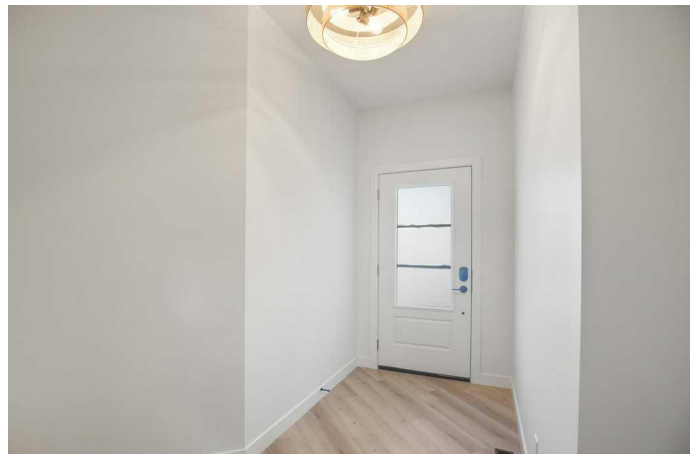
Built in 2025

Essential Information

MLS® #	A2264358
Price	\$439,865
Bedrooms	3
Bathrooms	2.00
Full Baths	2
Square Footage	1,138
Acres	0.07
Year Built	2025
Type	Residential
Sub-Type	Semi Detached
Style	Side by Side, Bungalow
Status	Active

Community Information

Address 112 Gray Close



Subdivision	Greyhawk
City	Sylvan Lake
County	Red Deer County
Province	Alberta
Postal Code	T4S 0W4

Amenities

Parking Spaces	2
Parking	Single Garage Attached
# of Garages	1

Interior

Interior Features	Quartz Counters
Appliances	Dishwasher, Garage Control(s), Microwave Hood Fan
Heating	High Efficiency, Forced Air, Natural Gas
Cooling	None
Has Basement	Yes
Basement	Full, Unfinished

Exterior

Exterior Features	BBQ gas line
Lot Description	Back Lane, Back Yard, See Remarks
Roof	Asphalt Shingle
Construction	Concrete, Vinyl Siding, Wood Frame
Foundation	Poured Concrete

Additional Information

Date Listed	October 14th, 2025
Days on Market	1
Zoning	R5A

Listing Details

Listing Office	Realty Executives Alberta Elite
----------------	---------------------------------

Data is supplied by Pillar 9â„¢ MLS® System. Pillar 9â„¢ is the owner of the copyright in its MLS® System. Data is deemed reliable but is not guaranteed accurate by Pillar 9â„¢. The trademarks MLS®, Multiple Listing Service® and the associated logos are owned by The Canadian Real Estate Association (CREA) and identify the quality of services provided by real estate professionals who are members of CREA. Used under license.