

\$839,000 - 250 Strathridge Place Sw, Calgary

MLS® #A2266137

\$839,000

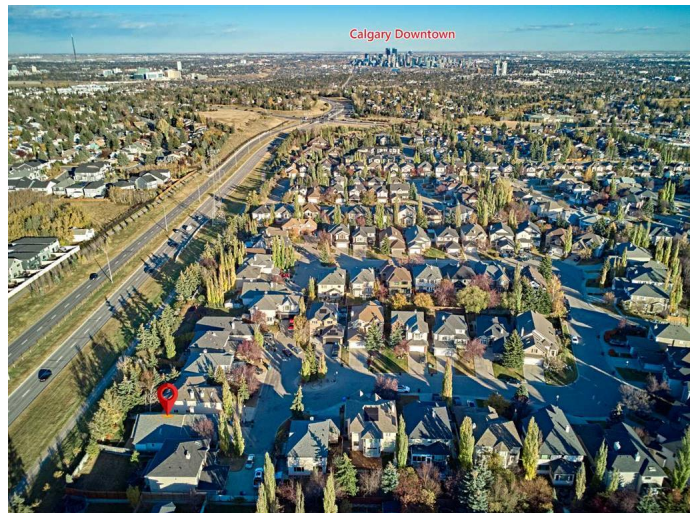
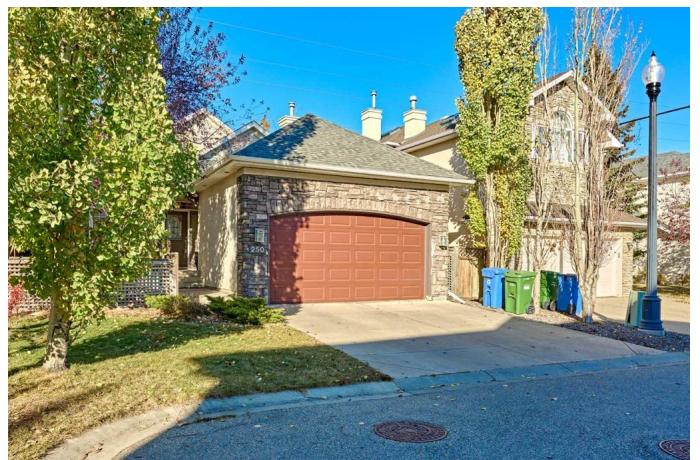
4 Bedroom, 3.00 Bathroom, 1,498 sqft
Residential on 0.11 Acres

Strathcona Park, Calgary, Alberta

Welcome to 250 Strathridge Place SW â€” a Morrison-built custom bungalow offering over 2,900 sq ft of beautifully designed living space, perfect for families, professionals, or those who love to entertain. With 4 bedrooms, 3 full bathrooms, and a dedicated home office, this property blends comfort, functionality, and thoughtful updates in one inviting package. Step inside to a bright, open-concept main floor featuring 9â€™™ vaulted ceilings, a skylight, extra-large windows, hardwood flooring, and fresh paint, all centered around the warmth of a fireplace. The kitchen is a chefâ€™™s delight with central island, ample cabinetry, and newer appliances, flowing seamlessly into the dining and living areas for effortless gatherings. The main level hosts 2 generous bedrooms, including a primary suite with a private 4-piece ensuite featuring a relaxing jacuzzi tub, plus another full 4-piece bath.

The fully finished basementâ€™™ with 8â€™™ ceilingsâ€™™ offers incredible versatility, including 2 additional bedrooms, a full bathroom, a spacious rec room with custom built-ins, and a separate office for work-from-home convenience. Comfort is enhanced year-round with central air conditioning, while the irrigation system keeps your landscaping lush with ease.

Tucked away in a quiet cul-de-sac in the highly sought-after community of Strathcona Park, this home offers quick access to Stoney Trail, is just 15 minutes to downtown, and is close to



top-rated public and private schools, shopping, parks, playgrounds, and transit.

Don't miss your chance to own this bright, functional, and well-appointed bungalow — book your private showing today!

Built in 1999

Essential Information

MLS® #	A2266137
Price	\$839,000
Bedrooms	4
Bathrooms	3.00
Full Baths	3
Square Footage	1,498
Acres	0.11
Year Built	1999
Type	Residential
Sub-Type	Detached
Style	Bungalow
Status	Active

Community Information

Address	250 Strathridge Place Sw
Subdivision	Strathcona Park
City	Calgary
County	Calgary
Province	Alberta
Postal Code	T3H 4J3

Amenities

Parking Spaces	4
Parking	Double Garage Attached
# of Garages	2

Interior

Interior Features	Bookcases, Built-in Features, Granite Counters, High Ceilings, Jetted Tub, No Animal Home, No Smoking Home, Open Floorplan, Walk-In Closet(s)
-------------------	---

Appliances	Central Air Conditioner, Dishwasher, Garburator, Microwave Hood Fan, Refrigerator, Washer/Dryer, Gas Range
Heating	Forced Air, Natural Gas
Cooling	Central Air
Fireplace	Yes
# of Fireplaces	1
Fireplaces	Gas, Living Room
Has Basement	Yes
Basement	Finished, Full

Exterior

Exterior Features	Courtyard
Lot Description	Back Yard, Cul-De-Sac, Rectangular Lot, Street Lighting
Roof	Asphalt Shingle
Construction	Stone, Stucco, Wood Frame
Foundation	Poured Concrete

Additional Information

Date Listed	October 21st, 2025
Days on Market	4
Zoning	R-G

Listing Details

Listing Office	YMK Real Estate & Management Inc.
----------------	-----------------------------------

Data is supplied by Pillar 9â„¢ MLSÂ® System. Pillar 9â„¢ is the owner of the copyright in its MLSÂ® System. Data is deemed reliable but is not guaranteed accurate by Pillar 9â„¢. The trademarks MLSÂ®, Multiple Listing ServiceÂ® and the associated logos are owned by The Canadian Real Estate Association (CREA) and identify the quality of services provided by real estate professionals who are members of CREA. Used under license.