

# \$675,000 - On Hwy 850, Rural Stettler No. 6, County of

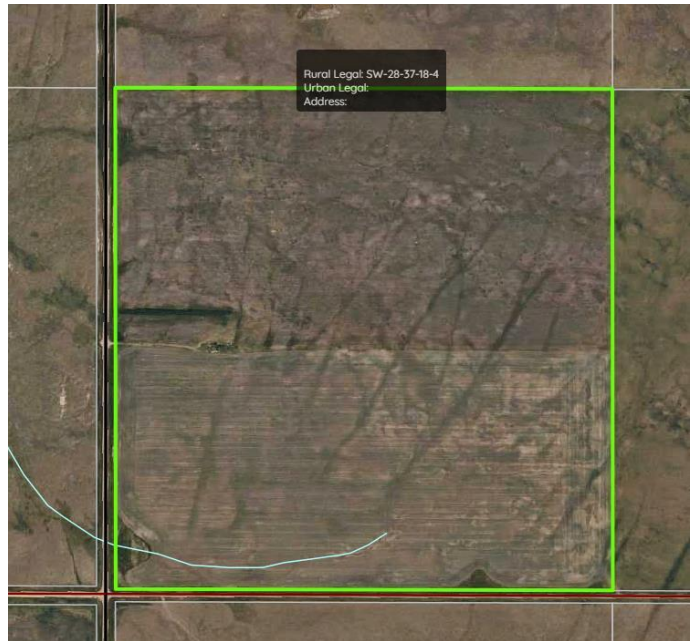
MLS® #A2267474

**\$675,000**

0 Bedroom, 0.00 Bathroom,  
Agri-Business on 0.00 Acres

NONE, Rural Stettler No. 6, County of, Alberta

Here is a great opportunity for grain farmers or anyone looking to invest in productive agricultural land. This 159-acre parcel of cultivated farmland is located approximately 15 minutes southeast of Stettler, offering a convenient rural setting with easy access. The land is flat, open, and highly usable, making it ideal for grain, hay, or mixed use. This is an ideal spot to start up a new farm production or expand your current farming operation. With plenty of space and a prime location, this property also offers potential for a new build site, hobby farm, or country lifestyle. Whether you are adding to your current farm or planning your next farming venture, this productive quarter provides excellent potential in a great central Alberta location.



## Essential Information

MLS® #	A2267474
Price	\$675,000
Bathrooms	0.00
Acres	0.00
Type	Agri-Business
Sub-Type	Agriculture
Status	Active

## Community Information

Address	On Hwy 850
Subdivision	NONE

City	Rural Stettler No. 6, County of
County	Stettler No. 6, County of
Province	Alberta
Postal Code	T0C 2L0

### **Additional Information**

Date Listed	October 28th, 2025
Days on Market	4
Zoning	Agriculture

### **Listing Details**

Listing Office	RE/MAX 1st Choice Realty
----------------	--------------------------

Data is supplied by Pillar 9â„¸ MLSÂ® System. Pillar 9â„¸ is the owner of the copyright in its MLSÂ® System. Data is deemed reliable but is not guaranteed accurate by Pillar 9â„¸. The trademarks MLSÂ®, Multiple Listing ServiceÂ® and the associated logos are owned by The Canadian Real Estate Association (CREA) and identify the quality of services provided by real estate professionals who are members of CREA. Used under license.