

\$475,000 - Aspen Drive, Edson

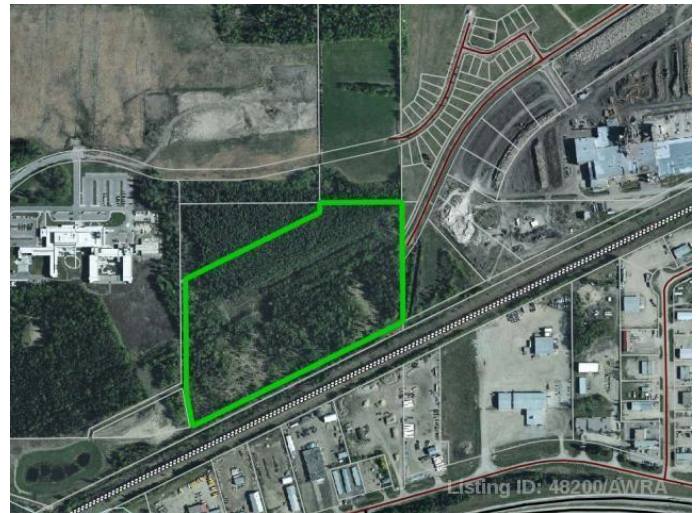
MLS® #AW48200

\$475,000

0 Bedroom, 0.00 Bathroom,
Land on 30.05 Acres

N/A, Edson, Alberta

Fantastic opportunity to own approximately 30 acres in town limits. Strategically located in the east end of Edson between the new Edson hospital and the Weyerhaeuser mill. The property is currently zoned Urban Reserve but with rezoning and Town approval the development possibilities are endless!



Essential Information

| | |
|-----------|-----------|
| MLS® # | AW48200 |
| Price | \$475,000 |
| Bathrooms | 0.00 |
| Acres | 30.05 |
| Type | Land |
| Sub-Type | Land |
| Status | Active |

Community Information

| | |
|-------------|-------------------|
| Address | Aspen Drive |
| Subdivision | N/A |
| City | Edson |
| County | Yellowhead County |
| Province | Alberta |

Additional Information

| | |
|----------------|---------------------|
| Date Listed | November 12th, 2018 |
| Days on Market | 2472 |
| Zoning | UR |

Listing Details

Listing Office

ROYAL LEPAGE EDSON REAL ESTATE

Data is supplied by Pillar 9â„¢ MLS® System. Pillar 9â„¢ is the owner of the copyright in its MLS® System. Data is deemed reliable but is not guaranteed accurate by Pillar 9â„¢. The trademarks MLS®, Multiple Listing Service® and the associated logos are owned by The Canadian Real Estate Association (CREA) and identify the quality of services provided by real estate professionals who are members of CREA. Used under license.