

# \$3,993,000 - 9801 102 Street, Clairmont

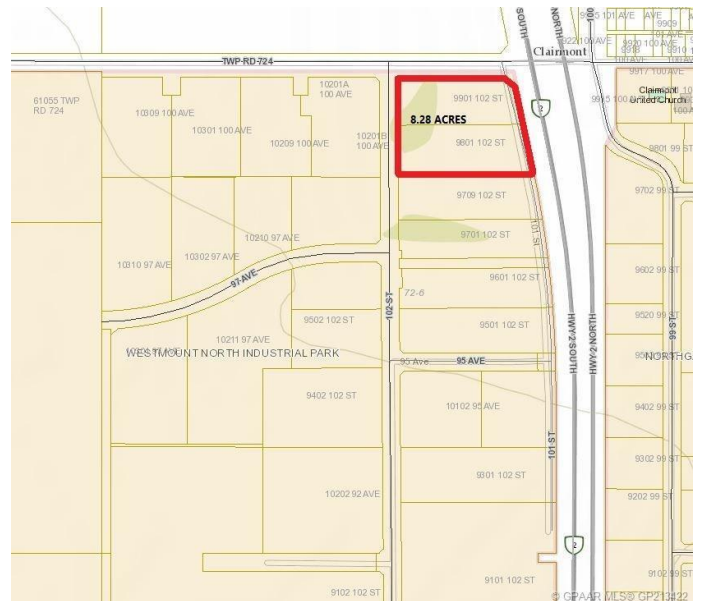
MLS® #GP213422

**\$3,993,000**

0 Bedroom, 0.00 Bathroom,  
Land on 8.28 Acres

N/A, Clairmont, Alberta

8.28 Acres with direct exposure to the Highway [HWY 2 North]. This lot is Zoned RM-4 - HIGHWAY INDUSTRIAL. Located Directly beside the New Co-OP Card Lock Station.



## Essential Information

|           |             |
|-----------|-------------|
| MLS® #    | GP213422    |
| Price     | \$3,993,000 |
| Bathrooms | 0.00        |
| Acres     | 8.28        |
| Type      | Land        |
| Sub-Type  | Land        |
| Status    | Active      |

## Community Information

|             |                                 |
|-------------|---------------------------------|
| Address     | 9801 102 Street                 |
| Subdivision | N/A                             |
| City        | Clairmont                       |
| County      | Grande Prairie No. 1, County of |
| Province    | Alberta                         |
| Postal Code | T0H 0W0                         |

## Additional Information

|                |                     |
|----------------|---------------------|
| Date Listed    | December 18th, 2019 |
| Days on Market | 2055                |
| Zoning         | RM-4                |

## Listing Details



Listing Office

Tom Shields Realty Inc.

Data is supplied by Pillar 9â„¢ MLSÂ® System. Pillar 9â„¢ is the owner of the copyright in its MLSÂ® System. Data is deemed reliable but is not guaranteed accurate by Pillar 9â„¢. The trademarks MLSÂ®, Multiple Listing ServiceÂ® and the associated logos are owned by The Canadian Real Estate Association (CREA) and identify the quality of services provided by real estate professionals who are members of CREA. Used under license.